

Datasheet for ABIN2712363

## S100A7 Protein (Myc-DYKDDDDK Tag)



[Go to Product page](#)

### 1 Image

#### Overview

|                               |  |
|-------------------------------|--|
| Quantity:                     | 20 µg  |
| Target:                       | S100A7   |
| Origin:                       | Human  |
| Source:                       | HEK-293 Cells  |
| Protein Type:                 | Recombinant  |
| Purification tag / Conjugate: | This S100A7 protein is labelled with Myc-DYKDDDDK Tag. |
| Application:                  | Antibody Production (AbP), Standard (STD)              |

#### Product Details

|                  |  |
|------------------|--|
| Characteristics: | <ul style="list-style-type: none"> <li>• Recombinant human S100A7 / Psoriasin protein expressed in HEK293 cells.</li> <li>• Produced with end-sequenced ORF clone</li> </ul> |
| Purity:          | > 80 % as determined by SDS-PAGE and Coomassie blue staining   |

#### Target Details

|                   |  |
|-------------------|--|
| Target:           | S100A7   |
| Alternative Name: | s100a7,psoriasin ( <a href="#">S100A7 Products</a> )   |
| Background:       | The protein encoded by this gene is a member of the S100 family of proteins containing 2 EF-hand calcium-binding motifs. S100 proteins are localized in the cytoplasm and/or nucleus of a wide range of cells, and involved in the regulation of a number of cellular processes such as cell cycle progression and differentiation. S100 genes include at least 13 members which are located as a cluster on chromosome 1q21. This protein differs from the other S100 proteins of |

## Target Details

known structure in its lack of calcium binding ability in one EF-hand at the N-terminus. The protein is overexpressed in hyperproliferative skin diseases, exhibits antimicrobial activities against bacteria and induces immunomodulatory activities.

Molecular Weight: 11.3 kDa

NCBI Accession: [NP\\_002954](#)

Pathways: [S100 Proteins](#)

## Application Details

Application Notes: Recombinant human proteins can be used for:  
Native antigens for optimized antibody production  
Positive controls in ELISA and other antibody assays

Comment: The tag is located at the C-terminal.

Restrictions: For Research Use only

## Handling

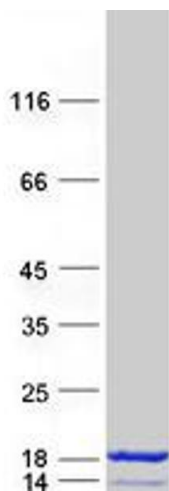
Concentration: 50 µg/mL

Buffer: 25 mM Tris.HCl, pH 7.3, 100 mM glycine, 10 % glycerol.

Storage: -80 °C

Storage Comment: Store at -80°C. Thaw on ice, aliquot to individual single-use tubes, and then re-freeze immediately. Only 2-3 freeze thaw cycles are recommended.

## Images



### Western Blotting

**Image 1.** Validation with Western Blot