

Datasheet for ABIN2712432

COL18A1 Protein (Transcript Variant 2)[Go to Product page](#)**1** Image

Overview

Quantity:	20 µg
Target:	COL18A1
Protein Characteristics:	Transcript Variant 2
Origin:	Human
Source:	Escherichia coli (E. coli)
Protein Type:	Recombinant
Biological Activity:	Active
Application:	Antibody Production (AbP), Functional Studies (Func), Protein Interaction (PI), Standard (STD)

Product Details

Specificity:	Optimal preservation of protein structure, post-translational modifications and functions.
Characteristics:	<ul style="list-style-type: none">• Recombinant human Collagen type XVIII alpha 1 chain (transcript variant 2) protein expressed in E. coli.• Produced with end-sequenced ORF clone• Tested for bioactivity.
Purity:	> 95 % as determined by SDS-PAGE and Coomassie blue staining
Endotoxin Level:	Endotoxin level is <0.1 ng/µg of protein (<1EU/µg).
Biological Activity Comment:	Measured by its ability to inhibit HUVEC migration.

Target Details

Target:	COL18A1
---------	---------

Target Details

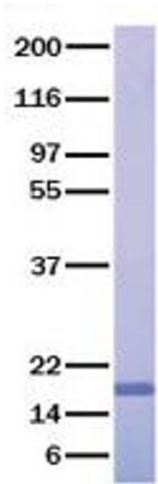
Alternative Name:	Collagen Type XVIII alpha 1 Chain (COL18A1 Products)
Background:	Endostatin potentially inhibits endothelial cell proliferation and angiogenesis. May inhibit angiogenesis by binding to the heparan sulfate proteoglycans involved in growth factor signaling. [UniProtKB/Swiss-Prot Function]
Molecular Weight:	20.2 kDa
NCBI Accession:	NP_569712

Application Details

Application Notes:	Recombinant human proteins can be used for: Native antigens for optimized antibody production Positive controls in ELISA and other antibody assays Protein-protein interaction In vitro biochemical assays and cell-based functional assays
Restrictions:	For Research Use only

Handling

Buffer:	Lyophilized from a 0.2 µM filtered solution of 20 mM phosphate buffer, 100 mM NaCl, pH 7.2
Handling Advice:	Resuspend the protein in the desired concentration in proper buffer
Storage:	-80 °C
Storage Comment:	Store at -80°C. Thaw on ice, aliquot to individual single-use tubes, and then re-freeze immediately. Only 2-3 freeze thaw cycles are recommended.



Western Blotting

Image 1. Validation with Western Blot