



Datasheet for ABIN2712537

## CPSF7 Protein (Transcript Variant 1) (Myc-DYKDDDDK Tag)



[Go to Product page](#)

### 1 Image

#### Overview

Quantity:	20 µg
Target:	CPSF7
Protein Characteristics:	Transcript Variant 1
Origin:	Human
Source:	HEK-293 Cells
Protein Type:	Recombinant
Purification tag / Conjugate:	This CPSF7 protein is labelled with Myc-DYKDDDDK Tag.
Application:	Antibody Production (AbP), Standard (STD)

#### Product Details

Characteristics:	<ul style="list-style-type: none"> <li>• Recombinant human CPSF7 (transcript variant 1) protein expressed in HEK293 cells.</li> <li>• Produced with end-sequenced ORF clone</li> </ul>
Purity:	> 80 % as determined by SDS-PAGE and Coomassie blue staining

#### Target Details

Target:	CPSF7
Alternative Name:	Cpsf7 ( <a href="#">CPSF7 Products</a> )
Background:	Cleavage factor Im (CFIm) is one of six factors necessary for correct cleavage and polyadenylation of pre-mRNAs. CFIm is composed of three different subunits of 25, 59, and 68 kDa, and it functions as a heterotetramer, with a dimer of the 25 kDa subunit binding to two of the 59 or 68 kDa subunits. The protein encoded by this gene represents the 59 kDa subunit,

## Target Details

which can interact with the splicing factor U2 snRNP Auxiliary Factor (U2AF) 65 to link the splicing and polyadenylation complexes.

Molecular Weight: 51.9 kDa

NCBI Accession: [NP\\_079087](#)

## Application Details

Application Notes: Recombinant human proteins can be used for:  
Native antigens for optimized antibody production  
Positive controls in ELISA and other antibody assays

Comment: The tag is located at the C-terminal.

Restrictions: For Research Use only

## Handling

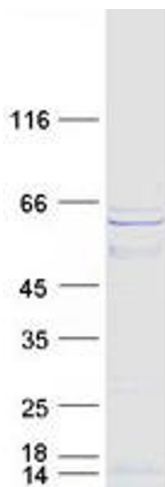
Concentration: 50 µg/mL

Buffer: 25 mM Tris.HCl, pH 7.3, 100 mM glycine, 10 % glycerol.

Storage: -80 °C

Storage Comment: Store at -80°C. Thaw on ice, aliquot to individual single-use tubes, and then re-freeze immediately. Only 2-3 freeze thaw cycles are recommended.

## Images



### Western Blotting

**Image 1.** Validation with Western Blot