

Datasheet for ABIN2712557
CREM Protein (His tag)



[Go to Product page](#)

1 Image

Overview

Quantity:	50 µg
Target:	CREM
Origin:	Human
Source:	Escherichia coli (E. coli)
Protein Type:	Recombinant
Purification tag / Conjugate:	This CREM protein is labelled with His tag.
Application:	Antibody Production (AbP), Standard (STD)

Product Details

Characteristics:	<ul style="list-style-type: none">• Recombinant human CREM (N-term HIS tag, transcript variant 15) protein expressed in E. coli.• Produced with end-sequenced ORF clone
Purity:	> 80 % as determined by SDS-PAGE and Coomassie blue staining

Target Details

Target:	CREM
Alternative Name:	Crem (CREM Products)
Background:	<p>This gene encodes a bZIP transcription factor that binds to the cAMP responsive element found in many viral and cellular promoters. It is an important component of cAMP-mediated signal transduction during the spermatogenic cycle, as well as other complex processes.</p> <p>Alternative promoter and translation initiation site usage allows this gene to exert spatial and</p>

Target Details

temporal specificity to cAMP responsiveness. Multiple alternatively spliced transcript variants encoding several different isoforms have been found for this gene, with some of them functioning as activators and some as repressors of transcription.

Molecular Weight: 29.5 kDa

NCBI Accession: [NP_877572](#)

Pathways: [Retinoic Acid Receptor Signaling Pathway](#)

Application Details

Application Notes: Recombinant human proteins can be used for:
Native antigens for optimized antibody production
Positive controls in ELISA and other antibody assays

Comment: The tag is located at the N-terminal.

Restrictions: For Research Use only

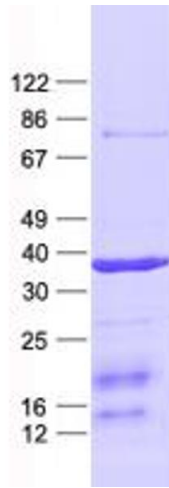
Handling

Concentration: 50 µg/mL

Buffer: 25 mM Tris, pH 8.0, 150 mM NaCl, 10 % glycerol, 1 % Sarkosyl. Store at -80C. Avoid repeated freeze-thaw cycles. Stable for at least 3 months from receipt of products under proper storage and handling conditions.

Storage: -80 °C

Storage Comment: Store at -80°C. Thaw on ice, aliquot to individual single-use tubes, and then re-freeze immediately. Only 2-3 freeze thaw cycles are recommended.



Western Blotting

Image 1. Validation with Western Blot