



[Go to Product page](#)

Datasheet for ABIN2712591

## CSTF3 Protein (Transcript Variant 1) (Myc-DYKDDDDK Tag)

### 1 Image

#### Overview

|                               |   |
|-------------------------------|---|
| Quantity:                     | 20 µg   |
| Target:                       | CSTF3   |
| Protein Characteristics:      | Transcript Variant 1                                  |
| Origin:                       | Human   |
| Source:                       | HEK-293 Cells   |
| Protein Type:                 | Recombinant   |
| Purification tag / Conjugate: | This CSTF3 protein is labelled with Myc-DYKDDDDK Tag. |
| Application:                  | Antibody Production (AbP), Standard (STD)             |

#### Product Details

|                  |   |
|------------------|---|
| Characteristics: | <ul style="list-style-type: none"><li>• Recombinant human CSTF3 (transcript variant 1) protein expressed in HEK293 cells.</li><li>• Produced with end-sequenced ORF clone</li></ul> |
| Purity:          | > 80 % as determined by SDS-PAGE and Coomassie blue staining  |

#### Target Details

|                   |  |
|-------------------|--|
| Target:           | CSTF3  |
| Alternative Name: | Cstf3 ( <a href="#">CSTF3 Products</a> )   |
| Background:       | One of the multiple factors required for polyadenylation and 3'-end cleavage of mammalian pre-mRNAs. [UniProtKB/Swiss-Prot Function] |
| Molecular Weight: | 82.7 kDa   |

## Target Details

---

NCBI Accession: [NP\\_001317](#)

## Application Details

---

Application Notes: Recombinant human proteins can be used for:  
Native antigens for optimized antibody production  
Positive controls in ELISA and other antibody assays

Comment: The tag is located at the C-terminal.

Restrictions: For Research Use only

## Handling

---

Concentration: 50 µg/mL

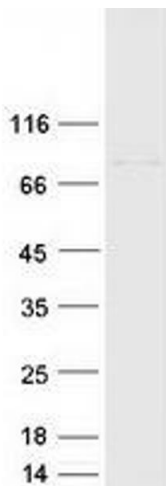
Buffer: 25 mM Tris.HCl, pH 7.3, 100 mM glycine, 10 % glycerol.

Storage: -80 °C

Storage Comment: Store at -80°C. Thaw on ice, aliquot to individual single-use tubes, and then re-freeze immediately. Only 2-3 freeze thaw cycles are recommended.

## Images

---



### Western Blotting

**Image 1.** Validation with Western Blot