



[Go to Product page](#)

Datasheet for ABIN2712601

CTBP2 Protein (Transcript Variant 3) (Myc-DYKDDDDK Tag)

1 Image

Overview

Quantity:	20 µg
Target:	CTBP2
Protein Characteristics:	Transcript Variant 3
Origin:	Human
Source:	HEK-293 Cells
Protein Type:	Recombinant
Purification tag / Conjugate:	This CTBP2 protein is labelled with Myc-DYKDDDDK Tag.
Application:	Antibody Production (AbP), Standard (STD)

Product Details

Characteristics:	<ul style="list-style-type: none">• Recombinant human CTBP2 (transcript variant 3) protein expressed in HEK293 cells.• Produced with end-sequenced ORF clone
------------------	---

Purity:	> 80 % as determined by SDS-PAGE and Coomassie blue staining
---------	--

Target Details

Target:	CTBP2
Alternative Name:	Ctbp2 (CTBP2 Products)
Background:	This gene produces alternative transcripts encoding two distinct proteins. One protein is a transcriptional repressor, while the other isoform is a major component of specialized synapses known as synaptic ribbons. Both proteins contain a NAD ⁺ binding domain similar to NAD ⁺ -dependent 2-hydroxyacid dehydrogenases. A portion of the 3' untranslated region was

Target Details

used to map this gene to chromosome 21q21.3 however, it was noted that similar loci elsewhere in the genome are likely. Blast analysis shows that this gene is present on chromosome 10. Several transcript variants encoding two different isoforms have been found for this gene.

Molecular Weight: 48.8 kDa

NCBI Accession: [NP_001077383](#)

Application Details

Application Notes: Recombinant human proteins can be used for:
Native antigens for optimized antibody production
Positive controls in ELISA and other antibody assays

Comment: The tag is located at the C-terminal.

Restrictions: For Research Use only

Handling

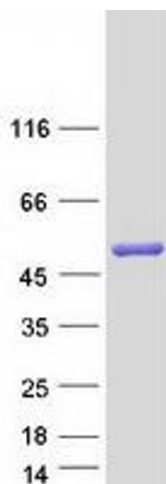
Concentration: 50 µg/mL

Buffer: 25 mM Tris.HCl, pH 7.3, 100 mM glycine, 10 % glycerol.

Storage: -80 °C

Storage Comment: Store at -80°C. Thaw on ice, aliquot to individual single-use tubes, and then re-freeze immediately. Only 2-3 freeze thaw cycles are recommended.

Images



Western Blotting

Image 1. Validation with Western Blot