

Datasheet for ABIN2712616

**CTPS2 Protein (Transcript Variant 1) (Myc-DYKDDDDK Tag)**[Go to Product page](#)**1** Image

## Overview

Quantity:	20 µg
Target:	CTPS2
Protein Characteristics:	Transcript Variant 1
Origin:	Human
Source:	HEK-293 Cells
Protein Type:	Recombinant
Purification tag / Conjugate:	This CTPS2 protein is labelled with Myc-DYKDDDDK Tag.
Application:	Antibody Production (AbP), Standard (STD)

## Product Details

Characteristics:	<ul style="list-style-type: none"><li>• Recombinant human CTP synthase 2 (transcript variant 1) protein expressed in HEK293 cells.</li><li>• Produced with end-sequenced ORF clone</li></ul>
Purity:	> 80 % as determined by SDS-PAGE and Coomassie blue staining

## Target Details

Target:	CTPS2
Alternative Name:	Ctp Synthase 2 ( <a href="#">CTPS2 Products</a> )
Background:	The protein encoded by this gene catalyzes the formation of CTP from UTP with the concomitant deamination of glutamine to glutamate. This protein is the rate-limiting enzyme in the synthesis of cytosine nucleotides, which play an important role in various metabolic

## Target Details

processes and provide the precursors necessary for the synthesis of RNA and DNA. Cancer cells that exhibit increased cell proliferation also exhibit an increased activity of this encoded protein. Thus, this protein is an attractive target for selective chemotherapy. Alternative splicing results in multiple transcript variants.

Molecular Weight: 65.5 kDa

NCBI Accession: [NP\\_062831](#)

Pathways: [Ribonucleoside Biosynthetic Process](#)

## Application Details

Application Notes: Recombinant human proteins can be used for:  
Native antigens for optimized antibody production  
Positive controls in ELISA and other antibody assays

Comment: The tag is located at the C-terminal.

Restrictions: For Research Use only

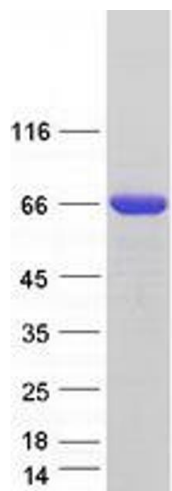
## Handling

Concentration: 50 µg/mL

Buffer: 25 mM Tris.HCl, pH 7.3, 100 mM glycine, 10 % glycerol.

Storage: -80 °C

Storage Comment: Store at -80°C. Thaw on ice, aliquot to individual single-use tubes, and then re-freeze immediately. Only 2-3 freeze thaw cycles are recommended.



Western Blotting

**Image 1.** Validation with Western Blot