

Datasheet for ABIN2712620
Chymotrypsin Protein (CTRL)[Go to Product page](#)

1 Image

Overview

Quantity:	10 µg
Target:	Chymotrypsin (CTRL)
Origin:	Human
Source:	HEK-293 Cells
Protein Type:	Recombinant
Application:	Antibody Production (AbP), Standard (STD)

Product Details

Characteristics:	<ul style="list-style-type: none">• Recombinant human CTRL1 protein expressed in HEK293 cells.• Produced with end-sequenced ORF clone
Purity:	> 95 % as determined by SDS-PAGE and Coomassie blue staining
Endotoxin Level:	< 0.1 EU per µg protein as determined by LAL test

Target Details

Target:	Chymotrypsin (CTRL)
Alternative Name:	Ctrl1 (CTRL Products)
Target Type:	Chemical
Background:	This gene encodes a serine-type endopeptidase with chymotrypsin- and elastase-2-like activities. The gene encoding this zymogen is expressed specifically in the pancreas and likely functions as a digestive enzyme.

Target Details

Molecular Weight:	27.2 kDa
NCBI Accession:	NP_001898

Application Details

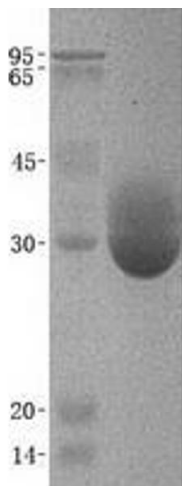
Application Notes:	Recombinant human proteins can be used for: Native antigens for optimized antibody production Positive controls in ELISA and other antibody assays
--------------------	--

Restrictions:	For Research Use only
---------------	-----------------------

Handling

Concentration:	50 µg/mL
Buffer:	20 mM Tris-HCl, 150 mM NaCl, 10 % Glycerol, pH 8.0. Avoid repeated freeze-thaw cycles. Stable for at least 3 months from receipt of products under proper storage and handling conditions.
Storage:	-80 °C
Storage Comment:	Store at -80°C. Thaw on ice, aliquot to individual single-use tubes, and then re-freeze immediately. Only 2-3 freeze thaw cycles are recommended.

Images



Western Blotting

Image 1. Validation with Western Blot