

Datasheet for ABIN2712726

**Cyclin G1 Protein (CCNG1) (DYKDDDDK Tag)**[Go to Product page](#)**1** Image

## Overview

Quantity:	20 µg
Target:	Cyclin G1 (CCNG1)
Origin:	Human
Source:	Insect cells (Sf9)
Protein Type:	Recombinant
Purification tag / Conjugate:	This Cyclin G1 protein is labelled with DYKDDDDK Tag.
Application:	Antibody Production (AbP), Standard (STD)

## Product Details

Characteristics:	<ul style="list-style-type: none"><li>• Recombinant human Cyclin G1 (full length, C-term DDK tag, transcript variant 2) protein expressed in Sf9 cells.</li><li>• Produced with end-sequenced ORF clone</li></ul>
Purity:	> 80 % as determined by SDS-PAGE and Coomassie blue staining

## Target Details

Target:	Cyclin G1 (CCNG1)
Alternative Name:	Cyclin g1 ( <a href="#">CCNG1 Products</a> )
Background:	The eukaryotic cell cycle is governed by cyclin-dependent protein kinases (CDKs) whose activities are regulated by cyclins and CDK inhibitors. The protein encoded by this gene is a member of the cyclin family and contains the cyclin box. The encoded protein lacks the protein destabilizing (PEST) sequence that is present in other family members. Transcriptional

## Target Details

	activation of this gene can be induced by tumor protein p53. Two transcript variants encoding the same protein have been identified for this gene.
Molecular Weight:	33.9 kDa
NCBI Accession:	<a href="#">NP_954854</a>
Pathways:	<a href="#">p53 Signaling</a>

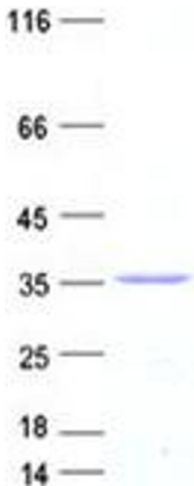
## Application Details

Application Notes:	Recombinant human proteins can be used for: Native antigens for optimized antibody production Positive controls in ELISA and other antibody assays
Comment:	The tag is located at the C-terminal.
Restrictions:	For Research Use only

## Handling

Concentration:	50 µg/mL
Buffer:	50 mM Tris-HCl, pH 8.0, 100 mM glycine, 10 % glycerol.
Storage:	-80 °C
Storage Comment:	Store at -80°C. Thaw on ice, aliquot to individual single-use tubes, and then re-freeze immediately. Only 2-3 freeze thaw cycles are recommended.

## Images



**Western Blotting**

**Image 1.** Validation with Western Blot