

Datasheet for ABIN2712832

**Keratin 26 Protein (KRT26) (His tag)****1** Image[Go to Product page](#)

## Overview

Quantity:	50 µg
Target:	Keratin 26 (KRT26)
Origin:	Human
Source:	Escherichia coli (E. coli)
Protein Type:	Recombinant
Purification tag / Conjugate:	This Keratin 26 protein is labelled with His tag.
Application:	Antibody Production (AbP), Standard (STD)

## Product Details

Characteristics:	<ul style="list-style-type: none"><li>• Recombinant human Cytokeratin 26 (full length, N-term HIS tag) protein expressed in E. coli.</li><li>• Produced with end-sequenced ORF clone</li></ul>
Purity:	> 80 % as determined by SDS-PAGE and Coomassie blue staining

## Target Details

Target:	Keratin 26 (KRT26)
Alternative Name:	Cytokeratin 26 ( <a href="#">KRT26 Products</a> )
Background:	The protein encoded by this gene is a member of the keratin superfamily. This keratin protein is a type I keratin that is specific for the inner root sheath of the hair follicle. This gene exists in a cluster with other keratin genes on chromosome 17q21.
Molecular Weight:	51.7 kDa

## Target Details

NCBI Accession: [NP\\_853517](#)

## Application Details

Application Notes: Recombinant human proteins can be used for:  
Native antigens for optimized antibody production  
Positive controls in ELISA and other antibody assays

Comment: The tag is located at the N-terminal.

Restrictions: For Research Use only

## Handling

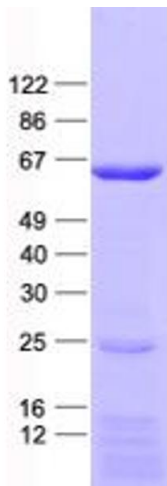
Concentration: 50 µg/mL

Buffer: 25 mM Tris, pH 8.0, 150 mM NaCl, 10 % glycerol, 1 % Sarkosyl. Store at -80°C. Avoid repeated freeze-thaw cycles. Stable for at least 3 months from receipt of products under proper storage and handling conditions.

Storage: -80 °C

Storage Comment: Store at -80°C. Thaw on ice, aliquot to individual single-use tubes, and then re-freeze immediately. Only 2-3 freeze thaw cycles are recommended.

## Images



### Western Blotting

**Image 1.** Validation with Western Blot