

Datasheet for ABIN2712856

Claudin 4 Protein (CLDN4) (Myc-DYKDDDDK Tag)[Go to Product page](#)**1** Image

Overview

Quantity:	20 µg
Target:	Claudin 4 (CLDN4)
Origin:	Human
Source:	HEK-293 Cells
Protein Type:	Recombinant
Purification tag / Conjugate:	This Claudin 4 protein is labelled with Myc-DYKDDDDK Tag.
Application:	Antibody Production (AbP), Standard (STD)

Product Details

Characteristics:	<ul style="list-style-type: none">• Recombinant human Claudin-4 / CLDN4 protein expressed in HEK293 cells.• Produced with end-sequenced ORF clone
Purity:	> 80 % as determined by SDS-PAGE and Coomassie blue staining

Target Details

Target:	Claudin 4 (CLDN4)
Alternative Name:	Claudin-4, cldn4 (CLDN4 Products)
Background:	The protein encoded by this intronless gene belongs to the claudin family. Claudins are integral membrane proteins that are components of the epithelial cell tight junctions, which regulate movement of solutes and ions through the paracellular space. This protein is a high-affinity receptor for Clostridium perfringens enterotoxin (CPE) and may play a role in internal organ development and function during pre- and postnatal life. This gene is deleted in Williams-

Target Details

	Beuren syndrome, a neurodevelopmental disorder affecting multiple systems.
Molecular Weight:	21.9 kDa
NCBI Accession:	NP_001296
Pathways:	Hepatitis C

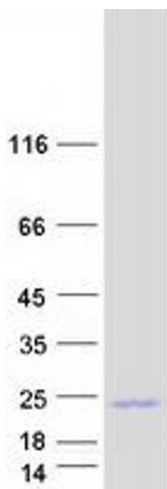
Application Details

Application Notes:	Recombinant human proteins can be used for: Native antigens for optimized antibody production Positive controls in ELISA and other antibody assays
Comment:	The tag is located at the C-terminal.
Restrictions:	For Research Use only

Handling

Concentration:	50 µg/mL
Buffer:	25 mM Tris.HCl, pH 7.3, 100 mM glycine, 10 % glycerol.
Storage:	-80 °C
Storage Comment:	Store at -80°C. Thaw on ice, aliquot to individual single-use tubes, and then re-freeze immediately. Only 2-3 freeze thaw cycles are recommended.

Images



Western Blotting

Image 1. Validation with Western Blot