

Datasheet for ABIN2712879

**CLIC5 Protein (Transcript Variant 1) (His tag)**[Go to Product page](#)**1** Image

## Overview

Quantity:	10 µg
Target:	CLIC5
Protein Characteristics:	Transcript Variant 1
Origin:	Human
Source:	Escherichia coli (E. coli)
Protein Type:	Recombinant
Purification tag / Conjugate:	This CLIC5 protein is labelled with His tag.
Application:	Antibody Production (AbP), Standard (STD)

## Product Details

Characteristics:	<ul style="list-style-type: none"><li>• Recombinant human CLIC5 (transcript variant 1) protein expressed in E. coli.</li><li>• Produced with end-sequenced ORF clone</li></ul>
Purity:	> 95 % as determined by SDS-PAGE and Coomassie blue staining
Endotoxin Level:	< 0.1 EU per µg protein as determined by LAL test

## Target Details

Target:	CLIC5
Alternative Name:	Clic5 ( <a href="#">CLIC5 Products</a> )
Background:	This gene encodes a member of the chloride intracellular channel (CLIC) family of chloride ion channels. The encoded protein associates with actin-based cytoskeletal structures and may

Target Details

	play a role in multiple processes including hair cell stereocilia formation, myoblast proliferation and glomerular podocyte and endothelial cell maintenance. Alternatively spliced transcript variants encoding multiple isoforms have been observed for this gene.
Molecular Weight:	30.3 kDa
NCBI Accession:	<a href="#">NP_001107558</a>
Pathways:	<a href="#">Sensory Perception of Sound</a>

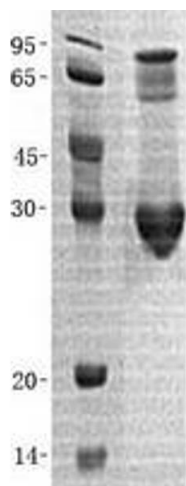
Application Details

Application Notes:	Recombinant human proteins can be used for: Native antigens for optimized antibody production Positive controls in ELISA and other antibody assays
Comment:	The tag is located at the C-terminal.
Restrictions:	For Research Use only

Handling

Buffer:	Lyophilized from a 0.2 µM filtered solution of 20 mM Phosphate buffer, 150 mM NaCl, pH 7.4. Stable for at least 6 months from date of receipt under proper storage and handling conditions.
Storage:	-80 °C
Storage Comment:	Store at -80°C. Thaw on ice, aliquot to individual single-use tubes, and then re-freeze immediately. Only 2-3 freeze thaw cycles are recommended.

Images



**Western Blotting**

**Image 1.** Validation with Western Blot