



[Go to Product page](#)

Datasheet for ABIN2713034

## CHAF1A Protein (Myc-DYKDDDDK Tag)

### 1 Image

#### Overview

Quantity:	20 µg
Target:	CHAF1A
Origin:	Human
Source:	HEK-293 Cells
Protein Type:	Recombinant
Purification tag / Conjugate:	This CHAF1A protein is labelled with Myc-DYKDDDDK Tag.
Application:	Antibody Production (AbP), Standard (STD)

#### Product Details

Characteristics:	<ul style="list-style-type: none"><li>• Recombinant human CAF-1 subunit A protein expressed in HEK293 cells.</li><li>• Produced with end-sequenced ORF clone</li></ul>
------------------	--

Purity:	> 80 % as determined by SDS-PAGE and Coomassie blue staining
---------	--

#### Target Details

Target:	CHAF1A
Alternative Name:	Caf-1 Subunit A ( <a href="#">CHAF1A Products</a> )
Background:	Chromatin assembly factor I (CAF1) is a nuclear complex consisting of p50, p60 (CHAF1B MIM 601245), and p150 (CHAF1A) subunits that assembles histone octamers onto replicating DNA in vitro (Kaufman et al., 1995 [PubMed 7600578]).[supplied by OMIM, Mar 2008]
Molecular Weight:	106.7 kDa

## Target Details

---

NCBI Accession: [NP\\_005474](#)

## Application Details

---

Application Notes: Recombinant human proteins can be used for:  
Native antigens for optimized antibody production  
Positive controls in ELISA and other antibody assays

Comment: The tag is located at the C-terminal.

Restrictions: For Research Use only

## Handling

---

Concentration: 50 µg/mL

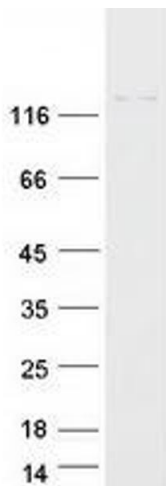
Buffer: 25 mM Tris.HCl, pH 7.3, 100 mM glycine, 10 % glycerol.

Storage: -80 °C

Storage Comment: Store at -80°C. Thaw on ice, aliquot to individual single-use tubes, and then re-freeze immediately. Only 2-3 freeze thaw cycles are recommended.

## Images

---



### Western Blotting

**Image 1.** Validation with Western Blot