

Datasheet for ABIN2713225

**CTSA Protein (Transcript Variant 1) (Myc-DYKDDDDK Tag)**[Go to Product page](#)**1** Image

## Overview

|                               |  |
|-------------------------------|--|
| Quantity:                     | 20 µg  |
| Target:                       | CTSA   |
| Protein Characteristics:      | Transcript Variant 1                                 |
| Origin:                       | Human  |
| Source:                       | HEK-293 Cells  |
| Protein Type:                 | Recombinant  |
| Purification tag / Conjugate: | This CTSA protein is labelled with Myc-DYKDDDDK Tag. |
| Application:                  | Antibody Production (AbP), Standard (STD)            |

## Product Details

|                  |   |
|------------------|---|
| Characteristics: | <ul style="list-style-type: none"><li>• Recombinant human Cathepsin A (transcript variant 1) protein expressed in HEK293 cells.</li><li>• Produced with end-sequenced ORF clone</li></ul> |
| Purity:          | > 80 % as determined by SDS-PAGE and Coomassie blue staining  |

## Target Details

|                   |   |
|-------------------|---|
| Target:           | CTSA  |
| Alternative Name: | Cathepsin A ( <a href="#">CTSA Products</a> )   |
| Background:       | This gene encodes a member of the peptidase S10 family of serine carboxypeptidases. Alternative splicing results in multiple transcript variants, at least one of which encodes a preproprotein that is proteolytically processed to generate two chains that comprise the heterodimeric active enzyme. This enzyme possesses deamidase, esterase and |

## Target Details

carboxypeptidase activities and acts as a scaffold in the lysosomal multienzyme complex.  
Mutations in this gene are associated with galactosialidosis.

Molecular Weight: 51.4 kDa

NCBI Accession: [NP\\_000299](#)

## Application Details

Application Notes: Recombinant human proteins can be used for:  
Native antigens for optimized antibody production  
Positive controls in ELISA and other antibody assays

Comment: The tag is located at the C-terminal.

Restrictions: For Research Use only

## Handling

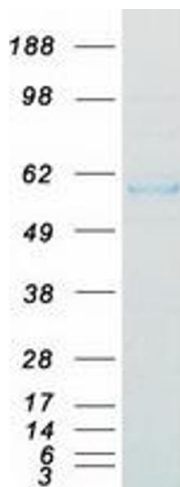
Concentration: 50 µg/mL

Buffer: 25 mM Tris.HCl, pH 7.3, 100 mM glycine, 10 % glycerol.

Storage: -80 °C

Storage Comment: Store at -80°C. Thaw on ice, aliquot to individual single-use tubes, and then re-freeze immediately. Only 2-3 freeze thaw cycles are recommended.

## Images



### Western Blotting

**Image 1.** Validation with Western Blot