

Datasheet for ABIN2713237

Cathepsin H Protein (CTSH) (Transcript Variant 1) (Myc-DYKDDDDK Tag)[Go to Product page](#)**1** Image

Overview

Quantity:	20 µg
Target:	Cathepsin H (CTSH)
Protein Characteristics:	Transcript Variant 1
Origin:	Human
Source:	HEK-293 Cells
Protein Type:	Recombinant
Purification tag / Conjugate:	This Cathepsin H protein is labelled with Myc-DYKDDDDK Tag.
Application:	Antibody Production (AbP), Standard (STD)

Product Details

Characteristics:	<ul style="list-style-type: none">• Recombinant human Cathepsin H (transcript variant 1) protein expressed in HEK293 cells.• Produced with end-sequenced ORF clone
Purity:	> 80 % as determined by SDS-PAGE and Coomassie blue staining

Target Details

Target:	Cathepsin H (CTSH)
Alternative Name:	Cathepsin H (CTSH Products)
Background:	The protein encoded by this gene is a lysosomal cysteine proteinase important in the overall degradation of lysosomal proteins. It is composed of a dimer of disulfide-linked heavy and light chains, both produced from a single protein precursor. The encoded protein, which belongs to the peptidase C1 protein family, can act both as an aminopeptidase and as an endopeptidase.

Target Details

Increased expression of this gene has been correlated with malignant progression of prostate tumors. Alternate splicing of this gene results in multiple transcript variants encoding different isoforms.

Molecular Weight: 35.1 kDa

NCBI Accession: [NP_004381](#)

Pathways: [Positive Regulation of Endopeptidase Activity](#)

Application Details

Application Notes: Recombinant human proteins can be used for:
Native antigens for optimized antibody production
Positive controls in ELISA and other antibody assays

Comment: The tag is located at the C-terminal.

Restrictions: For Research Use only

Handling

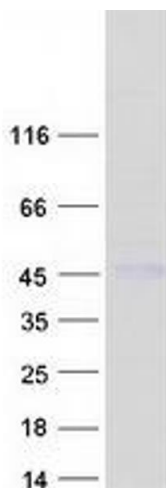
Concentration: 50 µg/mL

Buffer: 25 mM Tris.HCl, pH 7.3, 100 mM glycine, 10 % glycerol.

Storage: -80 °C

Storage Comment: Store at -80°C. Thaw on ice, aliquot to individual single-use tubes, and then re-freeze immediately. Only 2-3 freeze thaw cycles are recommended.

Images



Western Blotting

Image 1. Validation with Western Blot