

Datasheet for ABIN2713250

**MICU1 Protein (His tag)****1** Image[Go to Product page](#)

## Overview

Quantity:	50 µg
Target:	MICU1
Origin:	Human
Source:	Escherichia coli (E. coli)
Protein Type:	Recombinant
Purification tag / Conjugate:	This MICU1 protein is labelled with His tag.
Application:	Antibody Production (AbP), Standard (STD)

## Product Details

Characteristics:	<ul style="list-style-type: none"><li>• Recombinant human CBARA1 (full length, N-term HIS tag, transcript variant 1) protein expressed in E.coli.</li><li>• Produced with end-sequenced ORF clone</li></ul>
Purity:	> 80 % as determined by SDS-PAGE and Coomassie blue staining

## Target Details

Target:	MICU1
Alternative Name:	Cbara1 ( <a href="#">MICU1 Products</a> )
Background:	<p>This gene encodes an essential regulator of mitochondrial Ca<sup>2+</sup> uptake under basal conditions. The encoded protein interacts with the mitochondrial calcium uniporter, a mitochondrial inner membrane Ca<sup>2+</sup> channel, and is essential in preventing mitochondrial Ca<sup>2+</sup> overload, which can cause excessive production of reactive oxygen species and cell stress. Alternatively spliced</p>

## Target Details

transcript variants encoding different isoforms have been described.

Molecular Weight: 54.4 kDa

NCBI Accession: [NP\\_006068](#)

## Application Details

Application Notes: Recombinant human proteins can be used for:  
Native antigens for optimized antibody production  
Positive controls in ELISA and other antibody assays

Comment: The tag is located at the N-terminal.

Restrictions: For Research Use only

## Handling

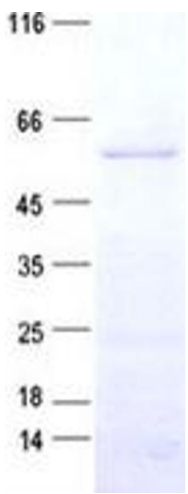
Concentration: 50 µg/mL

Buffer: 25 mM Tris, pH 8.0, 150 mM NaCl, 10 % glycerol, 1 % Sarkosyl.

Storage: -80 °C

Storage Comment: Store at -80°C. Thaw on ice, aliquot to individual single-use tubes, and then re-freeze immediately. Only 2-3 freeze thaw cycles are recommended.

## Images



### Western Blotting

**Image 1.** Validation with Western Blot