



[Go to Product page](#)

Datasheet for ABIN2713323

CCL1 Protein

1 Image

Overview

Quantity:	10 µg
Target:	CCL1
Origin:	Mouse
Source:	HEK-293 Cells
Protein Type:	Recombinant
Biological Activity:	Active
Application:	Functional Studies (Func), Antibody Production (AbP), Protein Interaction (PI), Standard (STD)

Product Details

Specificity:	Optimal preservation of protein structure, post-translational modifications and functions.
Characteristics:	<ul style="list-style-type: none">• Recombinant human CCL1 / I-309 protein expressed in HEK293.• Produced with end-sequenced ORF clone• Tested for bioactivity.
Purity:	> 98 % , as determined by Coomassie stained SDS-PAGE.
Endotoxin Level:	Less than 0.01 ng per µg protein as determined by the LAL method.
Biological Activity Comment:	Bioactivity was measured by its property to chemoattract mouse BW.5147.G.1.4OUAR.1 cells in a dose dependent manner.

Target Details

Target:	CCL1
Alternative Name:	Ccl1,i-309 (CCL1 Products)

Target Details

Molecular Weight: 7.7 kDa

NCBI Accession: [NP_035459](#)

Application Details

Application Notes: Recombinant human proteins can be used for:
Native antigens for optimized antibody production
Positive controls in ELISA and other antibody assays
Protein-protein interaction
In vitro biochemical assays and cell-based functional assays

Restrictions: For Research Use only

Handling

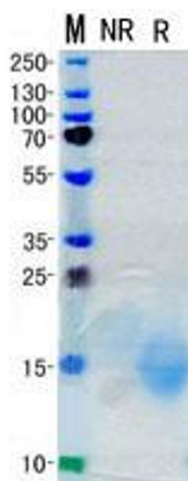
Concentration: > 50 µg/mL

Buffer: 1 x PBS

Storage: -80 °C

Storage Comment: Store at -80°C. Thaw on ice, aliquot to individual single-use tubes, and then re-freeze immediately. Only 2-3 freeze thaw cycles are recommended.

Images



Western Blotting

Image 1. Validation with Western Blot