

Datasheet for ABIN2713386

ITGAL Protein (Transcript Variant 1) (Myc-DYKDDDDK Tag)[1 Image](#)[1 Publication](#)[Go to Product page](#)

Overview

Quantity:	20 µg
Target:	ITGAL
Protein Characteristics:	Transcript Variant 1
Origin:	Human
Source:	HEK-293 Cells
Protein Type:	Recombinant
Purification tag / Conjugate:	This ITGAL protein is labelled with Myc-DYKDDDDK Tag.
Application:	Antibody Production (AbP), Standard (STD)

Product Details

Characteristics:	<ul style="list-style-type: none">• Recombinant human CD11a / ITGAL (transcript variant 1) protein expressed in HEK293 cells.• Produced with end-sequenced ORF clone
Purity:	> 80 % as determined by SDS-PAGE and Coomassie blue staining

Target Details

Target:	ITGAL
Alternative Name:	Cd11a,itgal (ITGAL Products)
Background:	ITGAL encodes the integrin alpha L chain. Integrins are heterodimeric integral membrane proteins composed of an alpha chain and a beta chain. This I-domain containing alpha integrin combines with the beta 2 chain (ITGB2) to form the integrin lymphocyte function-associated antigen-1 (LFA-1), which is expressed on all leukocytes. LFA-1 plays a central role in leukocyte

Target Details

intercellular adhesion through interactions with its ligands, ICAMs 1-3 (intercellular adhesion molecules 1 through 3), and also functions in lymphocyte costimulatory signaling. Two transcript variants encoding different isoforms have been found for this gene.

Molecular Weight: 126.1 kDa

NCBI Accession: [NP_002200](#)

Pathways: [Activated T Cell Proliferation](#), [Integrin Complex](#)

Application Details

Application Notes: Recombinant human proteins can be used for:
Native antigens for optimized antibody production
Positive controls in ELISA and other antibody assays

Comment: The tag is located at the C-terminal.

Restrictions: For Research Use only

Handling

Concentration: 50 µg/mL

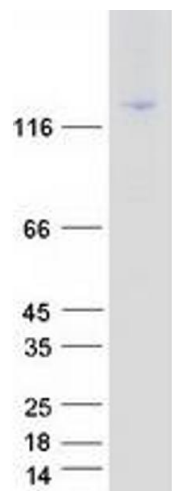
Buffer: 25 mM Tris.HCl, pH 7.3, 100 mM glycine, 10 % glycerol.

Storage: -80 °C

Storage Comment: Store at -80°C. Thaw on ice, aliquot to individual single-use tubes, and then re-freeze immediately. Only 2-3 freeze thaw cycles are recommended.

Publications

Product cited in: De Franceschi, Peuhu, Parsons, Rissanen, Vattulainen, Salmi, Ivaska, Pouwels: "Mutually Exclusive Roles of SHARPIN in Integrin Inactivation and NF-κB Signaling." in: **PLoS ONE**, Vol. 10, Issue 11, pp. e0143423, (2015) ([PubMed](#)).



Western Blotting

Image 1. Validation with Western Blot