



[Go to Product page](#)

Datasheet for ABIN2713522

FCER2 Protein (Transcript Variant 1)

1 Image

Overview

Quantity:	20 µg
Target:	FCER2
Protein Characteristics:	Transcript Variant 1
Origin:	Human
Source:	Escherichia coli (E. coli)
Protein Type:	Recombinant
Biological Activity:	Active
Application:	Functional Studies (Func), Antibody Production (AbP), Standard (STD), Protein Interaction (PI)

Product Details

Specificity:	Optimal preservation of protein structure, post-translational modifications and functions.
Characteristics:	<ul style="list-style-type: none">• Recombinant human CD23 (transcript variant 1) protein expressed in E. coli.• Produced with end-sequenced ORF clone• Tested for bioactivity.
Purity:	> 95 % as determined by SDS-PAGE and Coomassie blue staining
Endotoxin Level:	Endotoxin level is <0.1 ng/µg of protein (<1EU/µg).
Biological Activity Comment:	Measured by its ability to induce TNF-alpha production by human PBMCs.

Target Details

Target:	FCER2
---------	-------

Target Details

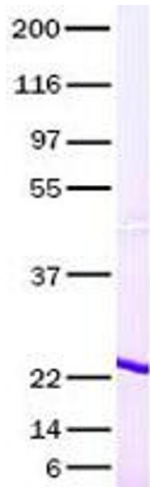
Alternative Name:	CD23 (FCER2 Products)
Background:	<p>The protein encoded by this gene is a B-cell specific antigen, and a low-affinity receptor for IgE. It has essential roles in B cell growth and differentiation, and the regulation of IgE production. This protein also exists as a soluble secreted form, then functioning as a potent mitogenic growth factor. Alternatively spliced transcript variants encoding different isoforms have been described for this gene.[provided by RefSeq, Jul 2011].</p>
Molecular Weight:	19.2 kDa
NCBI Accession:	NP_001993
Pathways:	Regulation of Leukocyte Mediated Immunity , Positive Regulation of Immune Effector Process

Application Details

Application Notes:	<p>Recombinant human proteins can be used for:</p> <ul style="list-style-type: none">Native antigens for optimized antibody productionPositive controls in ELISA and other antibody assaysProtein-protein interactionIn vitro biochemical assays and cell-based functional assays
Restrictions:	For Research Use only

Handling

Buffer:	Lyophilized from a 0.2 μ M filtered solution of 20 mM phosphate buffer, 100 mM NaCl, pH 7.2
Handling Advice:	Resuspend the protein in the desired concentration in proper buffer
Storage:	-80 °C
Storage Comment:	Store at -80°C. Thaw on ice, aliquot to individual single-use tubes, and then re-freeze immediately. Only 2-3 freeze thaw cycles are recommended.



Western Blotting

Image 1. Validation with Western Blot