

Datasheet for ABIN2713527 CD236/GYPC Protein (Transcript Variant 2) (Myc-DYKDDDDK Tag)



[Go to Product page](#)

1 Image

Overview

Quantity:	20 µg
Target:	CD236/GYPC (GYPC)
Protein Characteristics:	Transcript Variant 2
Origin:	Human
Source:	HEK-293 Cells
Protein Type:	Recombinant
Purification tag / Conjugate:	This CD236/GYPC protein is labelled with Myc-DYKDDDDK Tag.
Application:	Antibody Production (AbP), Standard (STD)

Product Details

Characteristics:	<ul style="list-style-type: none">• Recombinant human CD236 / GYPC (transcript variant 2) protein expressed in HEK293 cells.• Produced with end-sequenced ORF clone
Purity:	> 80 % as determined by SDS-PAGE and Coomassie blue staining

Target Details

Target:	CD236/GYPC (GYPC)
Alternative Name:	Cd236, gypc (GYPC Products)
Target Type:	Viral Protein
Background:	This protein is a minor sialoglycoprotein in human erythrocyte membranes. The blood group Gerbich antigens and receptors for Plasmodium falciparum merozoites are most likely located

Target Details

within the extracellular domain. Glycophorin-C plays an important role in regulating the stability of red cells. [UniProtKB/Swiss-Prot Function]

Molecular Weight: 11.7 kDa

NCBI Accession: [NP_058131](#)

Application Details

Application Notes: Recombinant human proteins can be used for:
Native antigens for optimized antibody production
Positive controls in ELISA and other antibody assays

Comment: The tag is located at the C-terminal.

Restrictions: For Research Use only

Handling

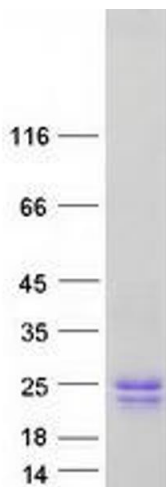
Concentration: 50 µg/mL

Buffer: 25 mM Tris.HCl, pH 7.3, 100 mM glycine, 10 % glycerol.

Storage: -80 °C

Storage Comment: Store at -80°C. Thaw on ice, aliquot to individual single-use tubes, and then re-freeze immediately. Only 2-3 freeze thaw cycles are recommended.

Images



Western Blotting

Image 1. Validation with Western Blot