

Datasheet for ABIN2713627

CD300LG Protein (Transcript Variant 4) (His tag)[Go to Product page](#)**1** Image

Overview

Quantity:	10 µg
Target:	CD300LG (TREM4)
Protein Characteristics:	Transcript Variant 4
Origin:	Human
Source:	HEK-293 Cells
Protein Type:	Recombinant
Purification tag / Conjugate:	This CD300LG protein is labelled with His tag.
Application:	Antibody Production (AbP), Standard (STD)

Product Details

Characteristics:	<ul style="list-style-type: none">• Recombinant human CD300LG / CLM9 (transcript variant 4) protein expressed in HEK293 cells.• Produced with end-sequenced ORF clone
Purity:	> 95 % as determined by SDS-PAGE and Coomassie blue staining
Endotoxin Level:	< 0.1 EU per µg protein as determined by LAL test

Target Details

Target:	CD300LG (TREM4)
Alternative Name:	Cd300lg,clm9 (TREM4 Products)
Background:	Members of the CD300 (see MIM 606786)-like (CD300L) family, such as CD300LG, are widely expressed on hematopoietic cells. All CD300L proteins are type I cell surface glycoproteins that

Target Details

	contain a single immunoglobulin (Ig) V-like domain (Takatsu et al., 2006 [PubMed 16876123]).[supplied by OMIM, Mar 2008].
Molecular Weight:	25.8 kDa
NCBI Accession:	NP_001161794

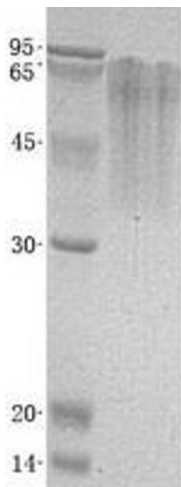
Application Details

Application Notes:	Recombinant human proteins can be used for: Native antigens for optimized antibody production Positive controls in ELISA and other antibody assays
Comment:	The tag is located at the C-terminal.
Restrictions:	For Research Use only

Handling

Buffer:	Lyophilized from a 0.2 µM filtered solution of 20 mM Phosphate buffer, 150 mM NaCl, pH 7.2. Stable for at least 6 months from date of receipt under proper storage and handling conditions.
Storage:	-80 °C
Storage Comment:	Store at -80°C. Thaw on ice, aliquot to individual single-use tubes, and then re-freeze immediately. Only 2-3 freeze thaw cycles are recommended.

Images



Western Blotting

Image 1. Validation with Western Blot