

Datasheet for ABIN2713651
F11R Protein



[Go to Product page](#)

1 Image

Overview

Quantity:	10 µg
Target:	F11R
Origin:	Human
Source:	HEK-293 Cells
Protein Type:	Recombinant
Application:	Antibody Production (AbP), Standard (STD)

Product Details

Characteristics:	<ul style="list-style-type: none"> • Recombinant human CD321 / JAM1 protein expressed in HEK293 cells. • Produced with end-sequenced ORF clone
Purity:	> 95 % as determined by SDS-PAGE and Coomassie blue staining
Endotoxin Level:	< 0.1 EU per µg protein as determined by LAL test

Target Details

Target:	F11R
Alternative Name:	Cd321,jam1 (F11R Products)
Background:	<p>Tight junctions represent one mode of cell-to-cell adhesion in epithelial or endothelial cell sheets, forming continuous seals around cells and serving as a physical barrier to prevent solutes and water from passing freely through the paracellular space. The protein encoded by this immunoglobulin superfamily gene member is an important regulator of tight junction assembly in epithelia. In addition, the encoded protein can act as (1) a receptor for reovirus, (2)</p>

Target Details

	a ligand for the integrin LFA1, involved in leukocyte transmigration, and (3) a platelet receptor. Multiple ' alternatively spliced variants, encoding the same protein, have been identified but their biological validity has not been established.
Molecular Weight:	23.9 kDa
NCBI Accession:	NP_058642
Pathways:	Cell-Cell Junction Organization

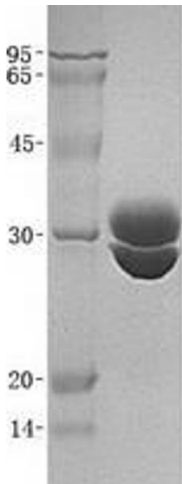
Application Details

Application Notes:	Recombinant human proteins can be used for: Native antigens for optimized antibody production Positive controls in ELISA and other antibody assays
Restrictions:	For Research Use only

Handling

Buffer:	Lyophilized from a 0.2 μM filtered solution of 20 mM Tris-HCl, 50 mM NaCl, 100 mM Glycine, pH 7.5. Stable for at least 6 months from date of receipt under proper storage and handling conditions.
Storage:	-80 °C
Storage Comment:	Store at -80°C. Thaw on ice, aliquot to individual single-use tubes, and then re-freeze immediately. Only 2-3 freeze thaw cycles are recommended.

Images



Western Blotting

Image 1. Validation with Western Blot