

Datasheet for ABIN2713677

NCR3 Protein (Transcript Variant 2) (His tag)[Go to Product page](#)**1** Image

Overview

Quantity:	10 µg
Target:	NCR3
Protein Characteristics:	Transcript Variant 2
Origin:	Human
Source:	HEK-293 Cells
Protein Type:	Recombinant
Purification tag / Conjugate:	This NCR3 protein is labelled with His tag.
Application:	Antibody Production (AbP), Standard (STD)

Product Details

Characteristics:	<ul style="list-style-type: none">• Recombinant human CD337 (transcript variant 2) protein expressed in HEK293 cells.• Produced with end-sequenced ORF clone
Purity:	> 95 % as determined by SDS-PAGE and Coomassie blue staining
Endotoxin Level:	< 0.1 EU per µg protein as determined by LAL test

Target Details

Target:	NCR3
Alternative Name:	CD337 (NCR3 Products)
Background:	The protein encoded by this gene is a natural cytotoxicity receptor (NCR) that may aid NK cells in the lysis of tumor cells. The encoded protein interacts with CD3-zeta (CD247), a T-cell

Target Details

receptor. A single nucleotide polymorphism in the 5' untranslated region of this gene has been associated with mild malaria susceptibility. Three transcript variants encoding different isoforms have been found for this gene.[provided by RefSeq, May 2010].

Molecular Weight: 12.8 kDa

NCBI Accession: [NP_001138938](#)

Pathways: [Regulation of Leukocyte Mediated Immunity](#), [Positive Regulation of Immune Effector Process](#)

Application Details

Application Notes: Recombinant human proteins can be used for:
Native antigens for optimized antibody production
Positive controls in ELISA and other antibody assays

Comment: The tag is located at the C-terminal.

Restrictions: For Research Use only

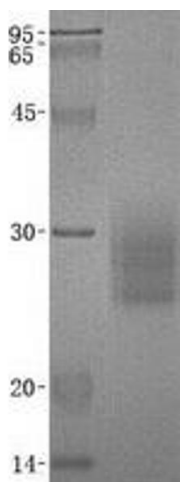
Handling

Buffer: Lyophilized from a 0.2 μ M filtered solution of 20 mM Phosphate buffer, 150 mM NaCl, pH 7.2.
Stable for at least 6 months from date of receipt under proper storage and handling conditions.

Storage: -80 °C

Storage Comment: Store at -80°C. Thaw on ice, aliquot to individual single-use tubes, and then re-freeze immediately. Only 2-3 freeze thaw cycles are recommended.

Images



Western Blotting

Image 1. Validation with Western Blot