

Datasheet for ABIN2713775

**ST6GAL1 Protein (Transcript Variant 2)**[Go to Product page](#)**1** Image

## Overview

Quantity:	10 µg
Target:	ST6GAL1
Protein Characteristics:	Transcript Variant 2
Origin:	Human
Source:	HEK-293 Cells
Protein Type:	Recombinant
Application:	Antibody Production (AbP), Standard (STD)

## Product Details

Characteristics:	<ul style="list-style-type: none"><li>• Recombinant human CD75 / ST6GAL1 (transcript variant 2) protein expressed in HEK293 cells.</li><li>• Produced with end-sequenced ORF clone</li></ul>
Purity:	> 95 % as determined by SDS-PAGE and Coomassie blue staining
Endotoxin Level:	< 0.1 EU per µg protein as determined by LAL test

## Target Details

Target:	ST6GAL1
Alternative Name:	Cd75,st6gal1 ( <a href="#">ST6GAL1 Products</a> )
Background:	This gene encodes a member of glycosyltransferase family 29. The encoded protein is a type II membrane protein that catalyzes the transfer of sialic acid from CMP-sialic acid to galactose-containing substrates. The protein, which is normally found in the Golgi but can be

## Target Details

proteolytically processed to a soluble form, is involved in the generation of the cell-surface carbohydrate determinants and differentiation antigens HB-6, CD75, and CD76. This gene has been incorrectly referred to as CD75. Three transcript variants encoding two different isoforms have been described.

Molecular Weight: 44.6 kDa

NCBI Accession: [NP\\_003023](#)

## Application Details

Application Notes: Recombinant human proteins can be used for:  
Native antigens for optimized antibody production  
Positive controls in ELISA and other antibody assays

Restrictions: For Research Use only

## Handling

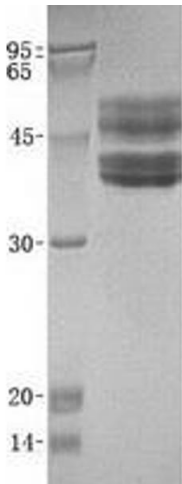
Concentration: 50 µg/mL

Buffer: 20 mM Tris-HCl, 150 mM NaCl, pH 8.0. Avoid repeated freeze-thaw cycles. Stable for at least 3 months from receipt of products under proper storage and handling conditions.

Storage: -80 °C

Storage Comment: Store at -80°C. Thaw on ice, aliquot to individual single-use tubes, and then re-freeze immediately. Only 2-3 freeze thaw cycles are recommended.

## Images



### Western Blotting

**Image 1.** Validation with Western Blot