

Datasheet for ABIN2713861

CDK2 Protein (Transcript Variant 1) (His tag)[Go to Product page](#)**1** Image

Overview

Quantity:	10 µg
Target:	CDK2
Protein Characteristics:	Transcript Variant 1
Origin:	Human
Source:	Escherichia coli (E. coli)
Protein Type:	Recombinant
Purification tag / Conjugate:	This CDK2 protein is labelled with His tag.
Application:	Antibody Production (AbP), Standard (STD)

Product Details

Characteristics:	<ul style="list-style-type: none">• Recombinant human CDK2 (transcript variant 1) protein expressed in E. coli.• Produced with end-sequenced ORF clone
Purity:	> 95 % as determined by SDS-PAGE and Coomassie blue staining
Endotoxin Level:	< 0.1 EU per µg protein as determined by LAL test

Target Details

Target:	CDK2
Alternative Name:	Cdk2 (CDK2 Products)
Background:	This gene encodes a member of a family of serine/threonine protein kinases that participate in cell cycle regulation. The encoded protein is the catalytic subunit of the cyclin-dependent

Target Details

protein kinase complex, which regulates progression through the cell cycle. Activity of this protein is especially critical during the G1 to S phase transition. This protein associates with and regulated by other subunits of the complex including cyclin A or E, CDK inhibitor p21Cip1 (CDKN1A), and p27Kip1 (CDKN1B). Alternative splicing results in multiple transcript variants.

Molecular Weight: 36.1 kDa

NCBI Accession: [NP_001789](#)

Pathways: [PI3K-Akt Signaling](#), [Cell Division Cycle](#), [Mitotic G1-G1/S Phases](#), [DNA Replication](#), [M Phase](#), [Synthesis of DNA](#)

Application Details

Application Notes: Recombinant human proteins can be used for:
Native antigens for optimized antibody production
Positive controls in ELISA and other antibody assays

Comment: The tag is located at the C-terminal.

Restrictions: For Research Use only

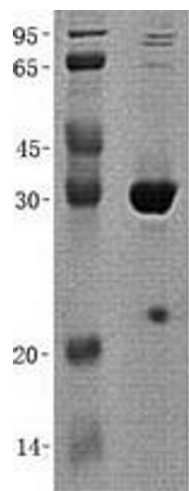
Handling

Concentration: 50 µg/mL

Buffer: 20 mM Tris-HCl, 200 mM NaCl, 1 mM DTT, 40 % Glycerol, pH 8.0. Avoid repeated freeze-thaw cycles. Stable for at least 3 months from receipt of products under proper storage and handling conditions.

Storage: -80 °C

Storage Comment: Store at -80°C. Thaw on ice, aliquot to individual single-use tubes, and then re-freeze immediately. Only 2-3 freeze thaw cycles are recommended.



Western Blotting

Image 1. Validation with Western Blot