



[Go to Product page](#)

Datasheet for ABIN2713876

## CDKN1B Protein (Myc-DYKDDDDK Tag)

### 1 Image

#### Overview

Quantity:	20 µg
Target:	CDKN1B
Origin:	Human
Source:	HEK-293 Cells
Protein Type:	Recombinant
Purification tag / Conjugate:	This CDKN1B protein is labelled with Myc-DYKDDDDK Tag.
Application:	Antibody Production (AbP), Standard (STD)

#### Product Details

Characteristics:

- Recombinant human CDKN1B / KIP1 protein expressed in HEK293 cells.
- Produced with end-sequenced ORF clone

Purity: > 80 % as determined by SDS-PAGE and Coomassie blue staining

#### Target Details

Target: CDKN1B

Alternative Name: Cdkn1b,kip1 ([CDKN1B Products](#))

Background: This gene encodes a cyclin-dependent kinase inhibitor, which shares a limited similarity with CDK inhibitor CDKN1A/p21. The encoded protein binds to and prevents the activation of cyclin E-CDK2 or cyclin D-CDK4 complexes, and thus controls the cell cycle progression at G1. The degradation of this protein, which is triggered by its CDK dependent phosphorylation and subsequent ubiquitination by SCF complexes, is required for the cellular transition from

## Target Details

---

quiescence to the proliferative state. Mutations in this gene are associated with multiple endocrine neoplasia type IV (MEN4).

Molecular Weight: 21.9 kDa

NCBI Accession: [NP\\_004055](#)

Pathways: [Cell Division Cycle](#), [Fc-epsilon Receptor Signaling Pathway](#), [EGFR Signaling Pathway](#), [Neurotrophin Signaling Pathway](#), [Positive Regulation of Peptide Hormone Secretion](#), [Negative Regulation of Hormone Secretion](#), [Sensory Perception of Sound](#), [Mitotic G1-G1/S Phases](#), [DNA Replication](#), [Positive Regulation of Endopeptidase Activity](#), [Synthesis of DNA](#), [Autophagy](#)

## Application Details

---

Application Notes: Recombinant human proteins can be used for:  
Native antigens for optimized antibody production  
Positive controls in ELISA and other antibody assays

Comment: The tag is located at the C-terminal.

Restrictions: For Research Use only

## Handling

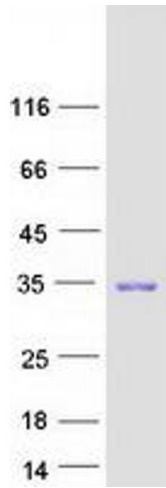
---

Concentration: 50 µg/mL

Buffer: 25 mM Tris.HCl, pH 7.3, 100 mM glycine, 10 % glycerol.

Storage: -80 °C

Storage Comment: Store at -80°C. Thaw on ice, aliquot to individual single-use tubes, and then re-freeze immediately. Only 2-3 freeze thaw cycles are recommended.



### Western Blotting

**Image 1.** Validation with Western Blot