

Datasheet for ABIN2713906

## CENPB Protein (Myc-DYKDDDDK Tag)



[Go to Product page](#)

### 1 Image

#### Overview

|                               |   |
|-------------------------------|---|
| Quantity:                     | 20 µg   |
| Target:                       | CENPB   |
| Origin:                       | Human   |
| Source:                       | HEK-293 Cells   |
| Protein Type:                 | Recombinant   |
| Purification tag / Conjugate: | This CENPB protein is labelled with Myc-DYKDDDDK Tag. |
| Application:                  | Antibody Production (AbP), Standard (STD)             |

#### Product Details

|                  |  |
|------------------|--|
| Characteristics: | <ul style="list-style-type: none"> <li>• Recombinant human CENP-B protein expressed in HEK293 cells.</li> <li>• Produced with end-sequenced ORF clone</li> </ul> |
| Purity:          | > 80 % as determined by SDS-PAGE and Coomassie blue staining   |

#### Target Details

|                   |   |
|-------------------|---|
| Target:           | CENPB   |
| Alternative Name: | Cenp-B ( <a href="#">CENPB Products</a> )   |
| Background:       | <p>This gene product is a highly conserved protein that facilitates centromere formation. It is a DNA-binding protein that is derived from transposases of the pogo DNA transposon family. It contains a helix-loop-helix DNA binding motif at the N-terminus, and a dimerization domain at the C-terminus. The DNA binding domain recognizes and binds a 17-bp sequence (CENP-B box) in the centromeric alpha satellite DNA. This protein is proposed to play an important role in the</p> |

Target Details

|                   |   |
|-------------------|---|
|                   | assembly of specific centromere structures in interphase nuclei and on mitotic chromosomes.<br>It is also considered a major centromere autoantigen recognized by sera from patients with anti-centromere antibodies. |
| Molecular Weight: | 65 kDa  |
| NCBI Accession:   | <a href="#">NP_001801</a>   |

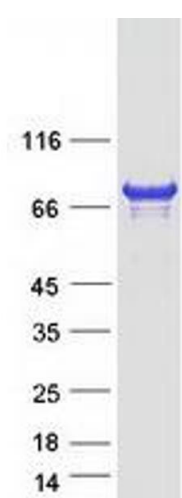
Application Details

|                    |  |
|--------------------|--|
| Application Notes: | Recombinant human proteins can be used for:<br>Native antigens for optimized antibody production<br>Positive controls in ELISA and other antibody assays |
| Comment:           | The tag is located at the C-terminal.  |
| Restrictions:      | For Research Use only  |

Handling

|                  |   |
|------------------|---|
| Concentration:   | 50 µg/mL  |
| Buffer:          | 25 mM Tris.HCl, pH 7.3, 100 mM glycine, 10 % glycerol.  |
| Storage:         | -80 °C  |
| Storage Comment: | Store at -80°C. Thaw on ice, aliquot to individual single-use tubes, and then re-freeze immediately. Only 2-3 freeze thaw cycles are recommended. |

Images



**Western Blotting**

**Image 1.** Validation with Western Blot