

Datasheet for ABIN2713909

CENPM Protein (Transcript Variant 1) (Myc-DYKDDDDK Tag)[Go to Product page](#)**1** Image

Overview

Quantity:	20 µg
Target:	CENPM
Protein Characteristics:	Transcript Variant 1
Origin:	Human
Source:	HEK-293 Cells
Protein Type:	Recombinant
Purification tag / Conjugate:	This CENPM protein is labelled with Myc-DYKDDDDK Tag.
Application:	Antibody Production (AbP), Standard (STD)

Product Details

Characteristics:	<ul style="list-style-type: none">• Recombinant human CENP-M (transcript variant 1) protein expressed in HEK293 cells.• Produced with end-sequenced ORF clone
Purity:	> 80 % as determined by SDS-PAGE and Coomassie blue staining

Target Details

Target:	CENPM
Alternative Name:	Cenp-M (CENPM Products)
Background:	The protein encoded by this gene is an inner protein of the kinetochore, the multi-protein complex that binds spindle microtubules to regulate chromosome segregation during cell division. It belongs to the constitutive centromere-associated network protein group, whose members interact with outer kinetochore proteins and help to maintain centromere identity at

Target Details

each cell division cycle. The protein is structurally related to GTPases but cannot bind guanosine triphosphate. A point mutation that affects interaction with another constitutive centromere-associated network protein, CENP-I, impairs kinetochore assembly and chromosome alignment, suggesting that it is required for kinetochore formation. Alternative splicing results in multiple transcript variants.

Molecular Weight: 19.6 kDa

NCBI Accession: [NP_076958](#)

Application Details

Application Notes: Recombinant human proteins can be used for:
Native antigens for optimized antibody production
Positive controls in ELISA and other antibody assays

Comment: The tag is located at the C-terminal.

Restrictions: For Research Use only

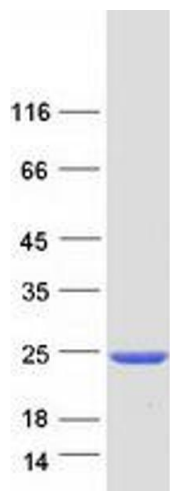
Handling

Concentration: 50 µg/mL

Buffer: 25 mM Tris.HCl, pH 7.3, 100 mM glycine, 10 % glycerol.

Storage: -80 °C

Storage Comment: Store at -80°C. Thaw on ice, aliquot to individual single-use tubes, and then re-freeze immediately. Only 2-3 freeze thaw cycles are recommended.



Western Blotting

Image 1. Validation with Western Blot