



[Go to Product page](#)

Datasheet for ABIN2713925

CBLN1 Protein (Myc-DYKDDDDK Tag)

1 Image

Overview

Quantity:	20 µg
Target:	CBLN1
Origin:	Human
Source:	HEK-293 Cells
Protein Type:	Recombinant
Purification tag / Conjugate:	This CBLN1 protein is labelled with Myc-DYKDDDDK Tag.
Application:	Antibody Production (AbP), Standard (STD)

Product Details

Characteristics:	<ul style="list-style-type: none">• Recombinant human Cerebellin-1 protein expressed in HEK293 cells.• Produced with end-sequenced ORF clone
------------------	---

Purity:	> 80 % as determined by SDS-PAGE and Coomassie blue staining
---------	--

Target Details

Target:	CBLN1
Alternative Name:	Cerebellin-1 (CBLN1 Products)
Background:	This gene encodes a cerebellum-specific precursor protein, precerebellin, with similarity to the globular (non-collagen-like) domain of complement component C1qB. Precerebellin is processed to give rise to several derivatives, including the hexadecapeptide, cerebellin, which is highly enriched in postsynaptic structures of Purkinje cells. Cerebellin has also been found in human and rat adrenals, where it has been shown to enhance the secretory activity of this

Target Details

gland.

Molecular Weight: 20.9 kDa

NCBI Accession: [NP_004343](#)

Application Details

Application Notes: Recombinant human proteins can be used for:
Native antigens for optimized antibody production
Positive controls in ELISA and other antibody assays

Comment: The tag is located at the C-terminal.

Restrictions: For Research Use only

Handling

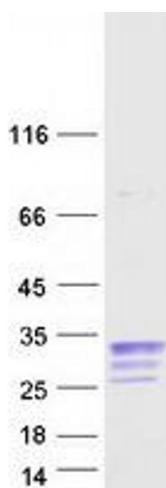
Concentration: 50 µg/mL

Buffer: 25 mM Tris.HCl, pH 7.3, 100 mM glycine, 10 % glycerol.

Storage: -80 °C

Storage Comment: Store at -80°C. Thaw on ice, aliquot to individual single-use tubes, and then re-freeze immediately. Only 2-3 freeze thaw cycles are recommended.

Images



Western Blotting

Image 1. Validation with Western Blot