

Datasheet for ABIN2714058
APOPT1 Protein (His tag)



[Go to Product page](#)

1 Image

Overview

Quantity:	50 µg
Target:	APOPT1
Origin:	Human
Source:	Escherichia coli (E. coli)
Protein Type:	Recombinant
Purification tag / Conjugate:	This APOPT1 protein is labelled with His tag.
Application:	Antibody Production (AbP), Standard (STD)

Product Details

Characteristics:	<ul style="list-style-type: none">• Recombinant human APOPT1 (full length, N-term HIS tag) protein expressed in E.coli.• Produced with end-sequenced ORF clone
Purity:	> 80 % as determined by SDS-PAGE and Coomassie blue staining

Target Details

Target:	APOPT1
Alternative Name:	Chromosome 14 Open Reading Frame 153 (c14orf153) (APOPT1 Products)
Background:	This gene encodes a protein that localizes to the mitochondria, where it stimulates the release of cytochrome c, thereby promoting programmed cell death. Mutations in this gene have been found in individuals with mitochondrial complex IV deficiency. Alternative splicing results in multiple transcript variants.
Molecular Weight:	24 kDa

Target Details

NCBI Accession: [NP_115750](#)

Pathways: [Positive Regulation of Endopeptidase Activity](#)

Application Details

Application Notes: Recombinant human proteins can be used for:
Native antigens for optimized antibody production
Positive controls in ELISA and other antibody assays

Comment: The tag is located at the N-terminal.

Restrictions: For Research Use only

Handling

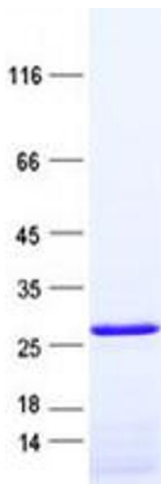
Concentration: 50 µg/mL

Buffer: 50 mM Tris, pH 8.0, 500 mM NaCl, 10 % glycerol.

Storage: -80 °C

Storage Comment: Store at -80°C. Thaw on ice, aliquot to individual single-use tubes, and then re-freeze immediately. Only 2-3 freeze thaw cycles are recommended.

Images



Western Blotting

Image 1. Validation with Western Blot