

Datasheet for ABIN2714127

## C4ORF26 Protein (Myc-DYKDDDDK Tag)



[Go to Product page](#)

### 1 Image

#### Overview

Quantity:	20 µg
Target:	C4ORF26
Origin:	Human
Source:	HEK-293 Cells
Protein Type:	Recombinant
Purification tag / Conjugate:	This C4ORF26 protein is labelled with Myc-DYKDDDDK Tag.
Application:	Antibody Production (AbP), Standard (STD)

#### Product Details

Characteristics:	<ul style="list-style-type: none"> <li>• Recombinant human C4orf26 protein expressed in HEK293 cells.</li> <li>• Produced with end-sequenced ORF clone</li> </ul>
Purity:	> 80 % as determined by SDS-PAGE and Coomassie blue staining

#### Target Details

Target:	C4ORF26
Abstract:	<a href="#">C4ORF26 Products</a>
Background:	<p>Dental enamel forms the outer cap of teeth and is the hardest substance found in vertebrates.</p> <p>This gene is thought to encode an extracellular matrix acidic phosphoprotein that has a function in enamel mineralization during amelogenesis. Mutations in this gene are associated with recessive hypomineralized amelogenesis imperfecta.</p>
Molecular Weight:	15.4 kDa

Target Details

NCBI Accession: [NP\\_848592](#)

Application Details

Application Notes: Recombinant human proteins can be used for:  
Native antigens for optimized antibody production  
Positive controls in ELISA and other antibody assays

Comment: The tag is located at the C-terminal.

Restrictions: For Research Use only

Handling

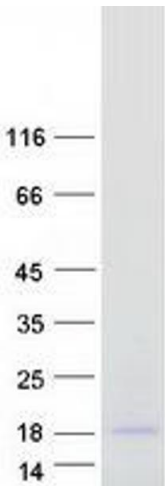
Concentration: 50 µg/mL

Buffer: 25 mM Tris.HCl, pH 7.3, 100 mM glycine, 10 % glycerol.

Storage: -80 °C

Storage Comment: Store at -80°C. Thaw on ice, aliquot to individual single-use tubes, and then re-freeze immediately. Only 2-3 freeze thaw cycles are recommended.

Images



**Western Blotting**  
**Image 1.** Validation with Western Blot