



[Go to Product page](#)

Datasheet for ABIN2714336

ACP2 Protein (Transcript Variant 1) (Myc-DYKDDDDK Tag)

1 Image

Overview

Quantity:	20 µg
Target:	ACP2
Protein Characteristics:	Transcript Variant 1
Origin:	Human
Source:	HEK-293 Cells
Protein Type:	Recombinant
Purification tag / Conjugate:	This ACP2 protein is labelled with Myc-DYKDDDDK Tag.
Application:	Antibody Production (AbP), Standard (STD)

Product Details

Characteristics:	<ul style="list-style-type: none">• Recombinant human ACP2 / LAP (transcript variant 1) protein expressed in HEK293 cells.• Produced with end-sequenced ORF clone
Purity:	> 80 % as determined by SDS-PAGE and Coomassie blue staining

Target Details

Target:	ACP2
Alternative Name:	Acp2,lap (ACP2 Products)
Background:	This gene encodes the beta subunit of lysosomal acid phosphatase (LAP). LAP is chemically and genetically distinct from red cell acid phosphatase. The encoded protein belongs to a family of distinct isoenzymes which hydrolyze orthophosphoric monoesters to alcohol and phosphate. LAP-deficiencies in mice cause multiple defects including bone structure

Target Details

alterations, lysosomal storage defects in the kidneys and central nervous system, and an increased tendency towards seizures. An enzymatically-inactive allele of LAP in mice exhibited a more severe phenotype than the null allele, and defects included cerebellum abnormalities, growth retardation, hair-follicle abnormalities, and an ataxia-like phenotype. Alternative splicing results in multiple transcript variants encoding different isoforms.

Molecular Weight: 45.1 kDa

NCBI Accession: [NP_001601](#)

Application Details

Application Notes: Recombinant human proteins can be used for:
Native antigens for optimized antibody production
Positive controls in ELISA and other antibody assays

Comment: The tag is located at the C-terminal.

Restrictions: For Research Use only

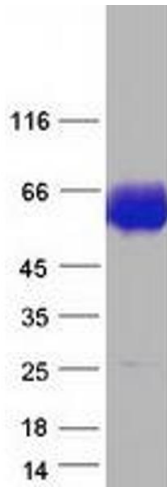
Handling

Concentration: 50 µg/mL

Buffer: 25 mM Tris.HCl, pH 7.3, 100 mM glycine, 10 % glycerol.

Storage: -80 °C

Storage Comment: Store at -80°C. Thaw on ice, aliquot to individual single-use tubes, and then re-freeze immediately. Only 2-3 freeze thaw cycles are recommended.



Western Blotting

Image 1. Validation with Western Blot