

Datasheet for ABIN2714344

**ACRV1 Protein (Transcript Variant 1) (His tag)**[Go to Product page](#)**1** Image

## Overview

Quantity:	10 µg
Target:	ACRV1
Protein Characteristics:	Transcript Variant 1
Origin:	Human
Source:	HEK-293 Cells
Protein Type:	Recombinant
Purification tag / Conjugate:	This ACRV1 protein is labelled with His tag.
Application:	Antibody Production (AbP), Standard (STD)

## Product Details

Characteristics:	<ul style="list-style-type: none"><li>• Recombinant human ACRV1 (transcript variant 1) protein expressed in HEK293 cells.</li><li>• Produced with end-sequenced ORF clone</li></ul>
Purity:	> 95 % as determined by SDS-PAGE and Coomassie blue staining
Endotoxin Level:	< 0.1 EU per µg protein as determined by LAL test

## Target Details

Target:	ACRV1
Alternative Name:	Acrv1 ( <a href="#">ACRV1 Products</a> )
Background:	This gene encodes a testis-specific, differentiation antigen, acrosomal vesicle protein 1, that arises within the acrosomal vesicle during spermatogenesis, and is associated with the

## Target Details

acrosomal membranes and matrix of mature sperm. The acrosomal vesicle protein 1 may be involved in sperm-zona binding or penetration. Alternatively spliced transcript variants have been described.

Molecular Weight: 26.9 kDa

NCBI Accession: [NP\\_001603](#)

## Application Details

Application Notes: Recombinant human proteins can be used for:  
Native antigens for optimized antibody production  
Positive controls in ELISA and other antibody assays

Comment: The tag is located at the N-terminal.

Restrictions: For Research Use only

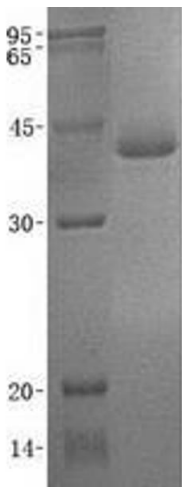
## Handling

Buffer: Lyophilized from a 0.2 µM filtered solution of 20 mM Phosphate buffer, 150 mM NaCl, pH 7.2.  
Stable for at least 6 months from date of receipt under proper storage and handling conditions.

Storage: -80 °C

Storage Comment: Store at -80°C. Thaw on ice, aliquot to individual single-use tubes, and then re-freeze immediately. Only 2-3 freeze thaw cycles are recommended.

## Images



### Western Blotting

**Image 1.** Validation with Western Blot