



[Go to Product page](#)

Datasheet for ABIN2714435

Adrenomedullin Protein (ADM) (Myc-DYKDDDDK Tag)

1 Image

Overview

Quantity:	20 µg
Target:	Adrenomedullin (ADM)
Origin:	Human
Source:	HEK-293 Cells
Protein Type:	Recombinant
Purification tag / Conjugate:	This Adrenomedullin protein is labelled with Myc-DYKDDDDK Tag.
Application:	Antibody Production (AbP), Standard (STD)

Product Details

Characteristics:	<ul style="list-style-type: none">• Recombinant human Adrenomedullin / ADM protein expressed in HEK293 cells.• Produced with end-sequenced ORF clone
Purity:	> 80 % as determined by SDS-PAGE and Coomassie blue staining

Target Details

Target:	Adrenomedullin (ADM)
Abstract:	ADM Products
Target Type:	Hormone
Background:	The protein encoded by this gene is a prehormone which is cleaved to form two biologically active peptides, adrenomedullin and proadrenomedullin N-terminal 20 peptide. Adrenomedullin is a 52 aa peptide with several functions, including vasodilation, regulation of hormone secretion, promotion of angiogenesis, and antimicrobial activity. The antimicrobial activity is

Target Details

antibacterial, as the peptide has been shown to kill *E. coli* and *S. aureus* at low concentration.

Molecular Weight: 20.2 kDa

NCBI Accession: [NP_001115](#)

Pathways: [Hormone Transport](#), [Hormone Activity](#), [C21-Steroid Hormone Metabolic Process](#), [cAMP Metabolic Process](#), [Myometrial Relaxation and Contraction](#), [Regulation of G-Protein Coupled Receptor Protein Signaling](#), [Tube Formation](#)

Application Details

Application Notes: Recombinant human proteins can be used for:
Native antigens for optimized antibody production
Positive controls in ELISA and other antibody assays

Comment: The tag is located at the C-terminal.

Restrictions: For Research Use only

Handling

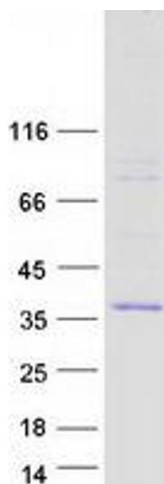
Concentration: 50 µg/mL

Buffer: 25 mM Tris.HCl, pH 7.3, 100 mM glycine, 10 % glycerol.

Storage: -80 °C

Storage Comment: Store at -80°C. Thaw on ice, aliquot to individual single-use tubes, and then re-freeze immediately. Only 2-3 freeze thaw cycles are recommended.

Images



Western Blotting

Image 1. Validation with Western Blot