

Datasheet for ABIN2714525

ALT Protein (Myc-DYKDDDDK Tag)[1 Image](#)[1 Publication](#)[Go to Product page](#)

Overview

Quantity:	20 µg
Target:	ALT
Origin:	Human
Source:	HEK-293 Cells
Protein Type:	Recombinant
Purification tag / Conjugate:	This ALT protein is labelled with Myc-DYKDDDDK Tag.
Application:	Antibody Production (AbP), Standard (STD)

Product Details

Characteristics:	<ul style="list-style-type: none">• Recombinant human Alanine aminotransferase 1 / ALT1 protein expressed in HEK293 cells.• Produced with end-sequenced ORF clone
Purity:	> 80 % as determined by SDS-PAGE and Coomassie blue staining

Target Details

Target:	ALT
Alternative Name:	Alanine Aminotransferase 1 (Alt1) (ALT Products)
Background:	This gene encodes cytosolic alanine aminotransaminase 1 (ALT1) also known as glutamate-pyruvate transaminase 1. This enzyme catalyzes the reversible transamination between alanine and 2-oxoglutarate to generate pyruvate and glutamate and, therefore, plays a key role in the intermediary metabolism of glucose and amino acids. Serum activity levels of this enzyme are routinely used as a biomarker of liver injury caused by drug toxicity, infection, alcohol, and

Target Details

steatosis. A related gene on chromosome 16 encodes a putative mitochondrial alanine aminotransaminase.[provided by RefSeq, Nov 2009].

Molecular Weight: 54.5 kDa

NCBI Accession: [NP_005300](#)

Application Details

Application Notes: Recombinant human proteins can be used for:
Native antigens for optimized antibody production
Positive controls in ELISA and other antibody assays

Comment: The tag is located at the C-terminal.

Restrictions: For Research Use only

Handling

Concentration: 50 µg/mL

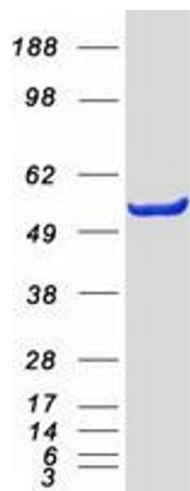
Buffer: 25 mM Tris.HCl, pH 7.3, 100 mM glycine, 10 % glycerol.

Storage: -80 °C

Storage Comment: Store at -80°C. Thaw on ice, aliquot to individual single-use tubes, and then re-freeze immediately. Only 2-3 freeze thaw cycles are recommended.

Publications

Product cited in: Uhlén, Oksvold, Älgenäs, Hamsten, Fagerberg, Klevebring, Lundberg, Odeberg, Pontén, Kondo, Sivertsson: "Antibody-based protein profiling of the human chromosome 21." in: **Molecular & cellular proteomics : MCP**, Vol. 11, Issue 3, pp. M111.013458, (2012) ([PubMed](#)).



Western Blotting

Image 1. Validation with Western Blot