



[Go to Product page](#)

Datasheet for ABIN2714683

ANG Protein (Transcript Variant 2) (His tag)

1 Image

Overview

Quantity:	10 µg
Target:	ANG
Protein Characteristics:	Transcript Variant 2
Origin:	Human
Source:	Escherichia coli (E. coli)
Protein Type:	Recombinant
Purification tag / Conjugate:	This ANG protein is labelled with His tag.
Application:	Antibody Production (AbP), Standard (STD)

Product Details

Characteristics:	<ul style="list-style-type: none">• Recombinant human Angiogenin (transcript variant 2) protein expressed in E. coli.• Produced with end-sequenced ORF clone
Purity:	> 95 % as determined by SDS-PAGE and Coomassie blue staining
Endotoxin Level:	< 0.1 EU per µg protein as determined by LAL test

Target Details

Target:	ANG
Alternative Name:	Angiogenin (ANG Products)
Background:	The protein encoded by this gene is an exceedingly potent mediator of new blood vessel formation. It hydrolyzes cellular tRNAs resulting in decreased protein synthesis and is similar to

Target Details

pancreatic ribonuclease. In addition, the mature peptide has antimicrobial activity against some bacteria and fungi, including *S. pneumoniae* and *C. albicans*. Alternative splicing results in two transcript variants encoding the same protein. This gene and the gene that encodes ribonuclease, RNase A family, 4 share promoters and 5' exons. Each gene splices to a unique downstream exon that contains its complete coding region.

Molecular Weight: 14.3 kDa

NCBI Accession: [NP_001091046](#)

Application Details

Application Notes: Recombinant human proteins can be used for:
Native antigens for optimized antibody production
Positive controls in ELISA and other antibody assays

Comment: The tag is located at the C-terminal.

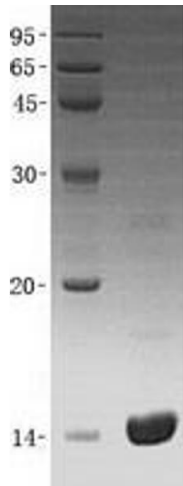
Restrictions: For Research Use only

Handling

Buffer: Lyophilized from a 0.2 µM filtered solution of 20 mM Phosphate buffer, 150 mM NaCl, pH 7.4.
Stable for at least 6 months from date of receipt under proper storage and handling conditions.

Storage: -80 °C

Storage Comment: Store at -80°C. Thaw on ice, aliquot to individual single-use tubes, and then re-freeze immediately. Only 2-3 freeze thaw cycles are recommended.



Western Blotting

Image 1. Validation with Western Blot