

Datasheet for ABIN2714685

**AMOTL2 Protein (Myc-DYKDDDDK Tag)**[Go to Product page](#)**1** Image

## Overview

Quantity:	20 µg
Target:	AMOTL2
Origin:	Human
Source:	HEK-293 Cells
Protein Type:	Recombinant
Purification tag / Conjugate:	This AMOTL2 protein is labelled with Myc-DYKDDDDK Tag.
Application:	Antibody Production (AbP), Standard (STD)

## Product Details

Characteristics:	<ul style="list-style-type: none"><li>• Recombinant human Angiotensin-like protein 2 / AMOTL2 protein expressed in HEK293 cells.</li><li>• Produced with end-sequenced ORF clone</li></ul>
Purity:	> 80 % as determined by SDS-PAGE and Coomassie blue staining

## Target Details

Target:	AMOTL2
Alternative Name:	Angiotensin-Like Protein 2 ( <a href="#">AMOTL2 Products</a> )
Background:	Angiotensin is a protein that binds angiotensin, a circulating inhibitor of the formation of new blood vessels (angiogenesis). Angiotensin mediates angiotensin inhibition of endothelial cell migration and tube formation in vitro. The protein encoded by this gene is related to angiotensin and is a member of the motin protein family. Alternative splicing results in multiple transcript variants of this gene.

## Target Details

Molecular Weight: 85.7 kDa

NCBI Accession: [NP\\_057285](#)

## Application Details

Application Notes: Recombinant human proteins can be used for:  
Native antigens for optimized antibody production  
Positive controls in ELISA and other antibody assays

Comment: The tag is located at the C-terminal.

Restrictions: For Research Use only

## Handling

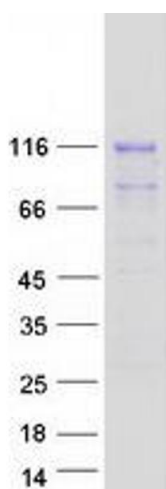
Concentration: 50 µg/mL

Buffer: 25 mM Tris.HCl, pH 7.3, 100 mM glycine, 10 % glycerol.

Storage: -80 °C

Storage Comment: Store at -80°C. Thaw on ice, aliquot to individual single-use tubes, and then re-freeze immediately. Only 2-3 freeze thaw cycles are recommended.

## Images



### Western Blotting

**Image 1.** Validation with Western Blot