

Datasheet for ABIN2714765

AP1B1 Protein (Transcript Variant 1) (Myc-DYKDDDDK Tag)[Go to Product page](#)**1** Image

Overview

Quantity:	20 µg
Target:	AP1B1
Protein Characteristics:	Transcript Variant 1
Origin:	Human
Source:	HEK-293 Cells
Protein Type:	Recombinant
Purification tag / Conjugate:	This AP1B1 protein is labelled with Myc-DYKDDDDK Tag.
Application:	Antibody Production (AbP), Standard (STD)

Product Details

Characteristics:	<ul style="list-style-type: none">• Recombinant human AP1 complex subunit beta-1 / AP1B1 (transcript variant 1) protein expressed in HEK293 cells.• Produced with end-sequenced ORF clone
Purity:	> 80 % as determined by SDS-PAGE and Coomassie blue staining

Target Details

Target:	AP1B1
Alternative Name:	Ap1 Complex Subunit beta-1,ap1b1 (AP1B1 Products)
Background:	Adaptor protein complex 1 is found at the cytoplasmic face of coated vesicles located at the Golgi complex, where it mediates both the recruitment of clathrin to the membrane and the recognition of sorting signals within the cytosolic tails of transmembrane receptors. This

Target Details

complex is a heterotetramer composed of two large, one medium, and one small adaptin subunit. The protein encoded by this gene serves as one of the large subunits of this complex and is a member of the adaptin protein family. This gene is a candidate meningioma gene. Alternative splicing results in multiple transcript variants.

Molecular Weight: 104.4 kDa

NCBI Accession: [NP_001118](#)

Application Details

Application Notes: Recombinant human proteins can be used for:
Native antigens for optimized antibody production
Positive controls in ELISA and other antibody assays

Comment: The tag is located at the C-terminal.

Restrictions: For Research Use only

Handling

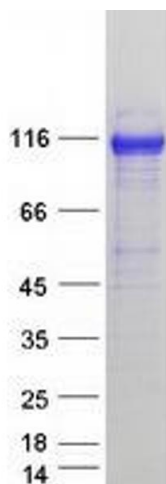
Concentration: 50 µg/mL

Buffer: 25 mM Tris.HCl, pH 7.3, 100 mM glycine, 10 % glycerol.

Storage: -80 °C

Storage Comment: Store at -80°C. Thaw on ice, aliquot to individual single-use tubes, and then re-freeze immediately. Only 2-3 freeze thaw cycles are recommended.

Validation report #102757 for Western Blotting (WB)



Western Blotting

Image 1. Validation with Western Blot