

Datasheet for ABIN2714769

**AP2M1 Protein (Transcript Variant 2) (Myc-DYKDDDDK Tag)**[Go to Product page](#)**1** Image

## Overview

Quantity:	20 µg
Target:	AP2M1
Protein Characteristics:	Transcript Variant 2
Origin:	Human
Source:	HEK-293 Cells
Protein Type:	Recombinant
Purification tag / Conjugate:	This AP2M1 protein is labelled with Myc-DYKDDDDK Tag.
Application:	Antibody Production (AbP), Standard (STD)

## Product Details

Characteristics:	<ul style="list-style-type: none"><li>• Recombinant human AP2 complex subunit mu-1 / AP2M1 (transcript variant 2) protein expressed in HEK293 cells.</li><li>• Produced with end-sequenced ORF clone</li></ul>
Purity:	> 80 % as determined by SDS-PAGE and Coomassie blue staining

## Target Details

Target:	AP2M1
Alternative Name:	Ap2 Complex Subunit mu-1,ap2m1 ( <a href="#">AP2M1 Products</a> )
Background:	This gene encodes a subunit of the heterotetrameric coat assembly protein complex 2 (AP2), which belongs to the adaptor complexes medium subunits family. The encoded protein is required for the activity of a vacuolar ATPase, which is responsible for proton pumping

## Target Details

occurring in the acidification of endosomes and lysosomes. The encoded protein may also play an important role in regulating the intracellular trafficking and function of CTLA-4 protein. Three transcript variants encoding different isoforms have been found for this gene.

Molecular Weight: 49.2 kDa

NCBI Accession: [NP\\_001020376](#)

Pathways: [EGFR Signaling Pathway](#), [Neurotrophin Signaling Pathway](#), [EGFR Downregulation](#), [SARS-CoV-2 Protein Interactome](#)

## Application Details

Application Notes: Recombinant human proteins can be used for:  
Native antigens for optimized antibody production  
Positive controls in ELISA and other antibody assays

Comment: The tag is located at the C-terminal.

Restrictions: For Research Use only

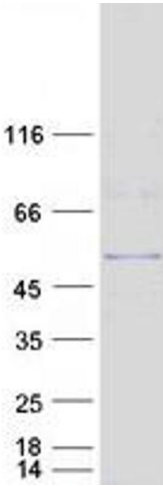
## Handling

Concentration: 50 µg/mL

Buffer: 25 mM Tris.HCl, pH 7.3, 100 mM glycine, 10 % glycerol.

Storage: -80 °C

Storage Comment: Store at -80°C. Thaw on ice, aliquot to individual single-use tubes, and then re-freeze immediately. Only 2-3 freeze thaw cycles are recommended.



Western Blotting

**Image 1.** Validation with Western Blot