

Datasheet for ABIN2714788

APEX1 Protein (Transcript Variant 1)[Go to Product page](#)**1** Image

Overview

Quantity:	10 µg
Target:	APEX1
Protein Characteristics:	Transcript Variant 1
Origin:	Human
Source:	Escherichia coli (E. coli)
Protein Type:	Recombinant
Application:	Antibody Production (AbP), Standard (STD)

Product Details

Characteristics:	<ul style="list-style-type: none">• Recombinant human APEX1 / REF-1 (transcript variant 1) protein expressed in E. coli.• Produced with end-sequenced ORF clone
Purity:	> 95 % as determined by SDS-PAGE and Coomassie blue staining
Endotoxin Level:	< 0.1 EU per µg protein as determined by LAL test

Target Details

Target:	APEX1
Alternative Name:	Apex1,ref-1 (APEX1 Products)
Background:	Apurinic/apyrimidinic (AP) sites occur frequently in DNA molecules by spontaneous hydrolysis, by DNA damaging agents or by DNA glycosylases that remove specific abnormal bases. AP sites are pre-mutagenic lesions that can prevent normal DNA replication so the cell contains systems to identify and repair such sites. Class II AP endonucleases cleave the phosphodiester

Target Details

	backbone 5' to the AP site. This gene encodes the major AP endonuclease in human cells. Splice variants have been found for this gene all encode the same protein.
Molecular Weight:	35.6 kDa
NCBI Accession:	NP_001632
Pathways:	DNA Damage Repair , Chromatin Binding , Cell RedoxHomeostasis , Smooth Muscle Cell Migration , Positive Regulation of Response to DNA Damage Stimulus

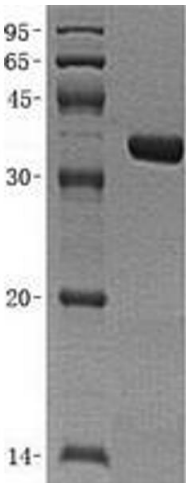
Application Details

Application Notes:	Recombinant human proteins can be used for: Native antigens for optimized antibody production Positive controls in ELISA and other antibody assays
Restrictions:	For Research Use only

Handling

Concentration:	50 µg/mL
Buffer:	10 mM HEPES, 100 mM KCl, 50 % Glycerol, pH 7.4. Avoid repeated freeze-thaw cycles. Stable for at least 3 months from receipt of products under proper storage and handling conditions.
Storage:	-80 °C
Storage Comment:	Store at -80°C. Thaw on ice, aliquot to individual single-use tubes, and then re-freeze immediately. Only 2-3 freeze thaw cycles are recommended.

Validation report #102757 for Western Blotting (WB)



Western Blotting

Image 1. Validation with Western Blot