

Datasheet for ABIN2714802

**Apoptosis Inhibitor 5 Protein (API5) (Transcript Variant 3)
(Myc-DYKDDDDK Tag)**[Go to Product page](#)**1** Image

Overview

Quantity:	20 µg
Target:	Apoptosis Inhibitor 5 (API5)
Protein Characteristics:	Transcript Variant 3
Origin:	Human
Source:	HEK-293 Cells
Protein Type:	Recombinant
Purification tag / Conjugate:	This Apoptosis Inhibitor 5 protein is labelled with Myc-DYKDDDDK Tag.
Application:	Antibody Production (AbP), Standard (STD)

Product Details

Characteristics:	<ul style="list-style-type: none">• Recombinant human API5 / MIG8 (transcript variant 3) protein expressed in HEK293 cells.• Produced with end-sequenced ORF clone
Purity:	> 80 % as determined by SDS-PAGE and Coomassie blue staining

Target Details

Target:	Apoptosis Inhibitor 5 (API5)
Alternative Name:	Api5,mig8 (API5 Products)
Background:	This gene encodes an apoptosis inhibitory protein whose expression prevents apoptosis after growth factor deprivation. This protein suppresses the transcription factor E2F1-induced apoptosis and also interacts with, and negatively regulates Acinus, a nuclear factor involved in apoptotic DNA fragmentation. Its depletion enhances the cytotoxic action of the

Target Details

	chemotherapeutic drugs. Multiple alternatively spliced transcript variants encoding different isoforms have been identified.
Molecular Weight:	50.6 kDa
NCBI Accession:	NP_001136403
Pathways:	Growth Factor Binding

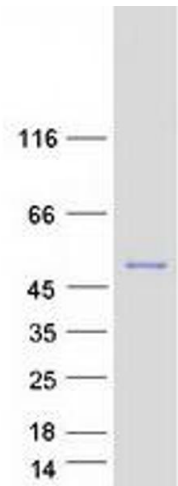
Application Details

Application Notes:	Recombinant human proteins can be used for: Native antigens for optimized antibody production Positive controls in ELISA and other antibody assays
Comment:	The tag is located at the C-terminal.
Restrictions:	For Research Use only

Handling

Concentration:	50 µg/mL
Buffer:	25 mM Tris.HCl, pH 7.3, 100 mM glycine, 10 % glycerol.
Storage:	-80 °C
Storage Comment:	Store at -80°C. Thaw on ice, aliquot to individual single-use tubes, and then re-freeze immediately. Only 2-3 freeze thaw cycles are recommended.

Validation report #102757 for Western Blotting (WB)



Western Blotting

Image 1. Validation with Western Blot