



[Go to Product page](#)

Datasheet for ABIN2714877
ARHGAP22 Protein (His tag)

1 Image

Overview

Quantity:	50 µg
Target:	ARHGAP22
Origin:	Human
Source:	Escherichia coli (E. coli)
Protein Type:	Recombinant
Purification tag / Conjugate:	This ARHGAP22 protein is labelled with His tag.
Application:	Antibody Production (AbP), Standard (STD)

Product Details

Characteristics:	<ul style="list-style-type: none">• Recombinant human ARHGAP22 (full length, N-term HIS tag) protein expressed in E. coli.• Produced with end-sequenced ORF clone
Purity:	> 80 % as determined by SDS-PAGE and Coomassie blue staining

Target Details

Target:	ARHGAP22
Alternative Name:	Arhgap22 (ARHGAP22 Products)
Background:	This gene encodes a member of the GTPase activating protein family which activates a GTPase belonging to the RAS superfamily of small GTP-binding proteins. The encoded protein is insulin-responsive, is dependent on the kinase Akt and requires the Akt-dependent 14-3-3 binding protein which binds sequentially to two serine residues. The result of these interactions is regulation of cell motility. Multiple transcript variants encoding different isoforms have been

Target Details

found for this gene.

Molecular Weight: 76.6 kDa

NCBI Accession: [NP_067049](#)

Application Details

Application Notes: Recombinant human proteins can be used for:
Native antigens for optimized antibody production
Positive controls in ELISA and other antibody assays

Comment: The tag is located at the N-terminal.

Restrictions: For Research Use only

Handling

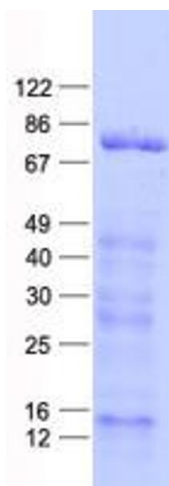
Concentration: 50 µg/mL

Buffer: 25 mM Tris, pH 8.0, 150 mM NaCl, 10 % glycerol, 1 % Sarkosyl.

Storage: -80 °C

Storage Comment: Store at -80°C. Thaw on ice, aliquot to individual single-use tubes, and then re-freeze immediately. Only 2-3 freeze thaw cycles are recommended.

Images



Western Blotting

Image 1. Validation with Western Blot