

Datasheet for ABIN2714890

**ARHGEF11 Protein (Transcript Variant 2) (Myc-DYKDDDDK Tag)**[Go to Product page](#)**1** Image

## Overview

Quantity:	20 µg
Target:	ARHGEF11
Protein Characteristics:	Transcript Variant 2
Origin:	Human
Source:	HEK-293 Cells
Protein Type:	Recombinant
Purification tag / Conjugate:	This ARHGEF11 protein is labelled with Myc-DYKDDDDK Tag.
Application:	Antibody Production (AbP), Standard (STD)

## Product Details

Characteristics:	<ul style="list-style-type: none"><li>• Recombinant human ARHGEF11 (transcript variant 2) protein expressed in HEK293 cells.</li><li>• Produced with end-sequenced ORF clone</li></ul>
Purity:	> 80 % as determined by SDS-PAGE and Coomassie blue staining

## Target Details

Target:	ARHGEF11
Alternative Name:	Arhgef11 ( <a href="#">ARHGEF11 Products</a> )
Background:	Rho GTPases play a fundamental role in numerous cellular processes that are initiated by extracellular stimuli that work through G protein coupled receptors. The encoded protein may form a complex with G proteins and stimulate Rho-dependent signals. A similar protein in rat interacts with glutamate transporter EAAT4 and modulates its glutamate transport activity.

## Target Details

Expression of the rat protein induces the reorganization of the actin cytoskeleton and its overexpression induces the formation of membrane ruffling and filopodia. Two alternative transcripts encoding different isoforms have been described.

Molecular Weight: 172.1 kDa

NCBI Accession: [NP\\_937879](#)

Pathways: [Neurotrophin Signaling Pathway](#), [Regulation of G-Protein Coupled Receptor Protein Signaling](#)

## Application Details

Application Notes: Recombinant human proteins can be used for:  
Native antigens for optimized antibody production  
Positive controls in ELISA and other antibody assays

Comment: The tag is located at the C-terminal.

Restrictions: For Research Use only

## Handling

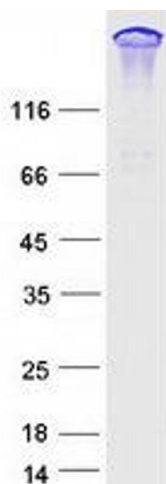
Concentration: 50 µg/mL

Buffer: 25 mM Tris.HCl, pH 7.3, 100 mM glycine, 10 % glycerol.

Storage: -80 °C

Storage Comment: Store at -80°C. Thaw on ice, aliquot to individual single-use tubes, and then re-freeze immediately. Only 2-3 freeze thaw cycles are recommended.

## Images



### Western Blotting

**Image 1.** Validation with Western Blot