

Datasheet for ABIN2714947

**beta Arrestin 1 Protein (Transcript Variant 1) (His tag)**[Go to Product page](#)**1** Image

## Overview

Quantity:	10 µg
Target:	beta Arrestin 1 (ARRB1)
Protein Characteristics:	Transcript Variant 1
Origin:	Human
Source:	Escherichia coli (E. coli)
Protein Type:	Recombinant
Purification tag / Conjugate:	This beta Arrestin 1 protein is labelled with His tag.
Application:	Antibody Production (AbP), Standard (STD)

## Product Details

Characteristics:	<ul style="list-style-type: none"><li>• Recombinant human Arrestin beta-1 / ARRB1 (transcript variant 1) protein expressed in E. coli.</li><li>• Produced with end-sequenced ORF clone</li></ul>
Purity:	> 95 % as determined by SDS-PAGE and Coomassie blue staining
Endotoxin Level:	< 0.1 EU per µg protein as determined by LAL test

## Target Details

Target:	beta Arrestin 1 (ARRB1)
Alternative Name:	Arrestin beta-1, arrb1 ( <a href="#">ARRB1 Products</a> )
Molecular Weight:	48.1 kDa

## Target Details

NCBI Accession:	<a href="#">NP_004032</a>
Pathways:	<a href="#">Positive Regulation of Peptide Hormone Secretion</a> , <a href="#">Nuclear Hormone Receptor Binding</a> , <a href="#">cAMP Metabolic Process</a> , <a href="#">Myometrial Relaxation and Contraction</a> , <a href="#">Synaptic Membrane</a> , <a href="#">Regulation of G-Protein Coupled Receptor Protein Signaling</a> , <a href="#">Phototransduction</a>

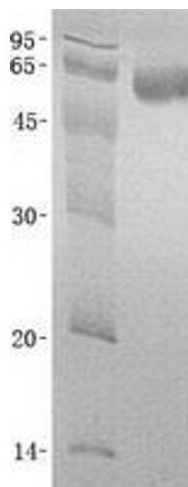
## Application Details

Application Notes:	Recombinant human proteins can be used for: Native antigens for optimized antibody production Positive controls in ELISA and other antibody assays
Comment:	The tag is located at the N-terminal.
Restrictions:	For Research Use only

## Handling

Buffer:	Lyophilized from a 0.2 µM filtered solution of 20 mM Phosphate buffer, 150 mM NaCl, pH 7.2. Stable for at least 6 months from date of receipt under proper storage and handling conditions.
Storage:	-80 °C
Storage Comment:	Store at -80°C. Thaw on ice, aliquot to individual single-use tubes, and then re-freeze immediately. Only 2-3 freeze thaw cycles are recommended.

## Images



### Western Blotting

**Image 1.** Validation with Western Blot