

Datasheet for ABIN2715020

ATF2 Protein (His tag)**1** Image[Go to Product page](#)

Overview

Quantity:	50 µg
Target:	ATF2
Origin:	Human
Source:	Escherichia coli (E. coli)
Protein Type:	Recombinant
Purification tag / Conjugate:	This ATF2 protein is labelled with His tag.
Application:	Antibody Production (AbP), Standard (STD)

Product Details

Characteristics:	<ul style="list-style-type: none">• Recombinant human ATF2 (full length, N-term HIS tag) protein expressed in E. coli.• Produced with end-sequenced ORF clone
Purity:	> 80 % as determined by SDS-PAGE and Coomassie blue staining

Target Details

Target:	ATF2
Alternative Name:	Atf2 (ATF2 Products)
Background:	This gene encodes a transcription factor that is a member of the leucine zipper family of DNA binding proteins. The encoded protein has been identified as a moonlighting protein based on its ability to perform mechanistically distinct functions This protein binds to the cAMP-responsive element (CRE), an octameric palindrome. It forms a homodimer or a heterodimer with c-Jun and stimulates CRE-dependent transcription. This protein is also a histone

Target Details

acetyltransferase (HAT) that specifically acetylates histones H2B and H4 in vitro thus it may represent a class of sequence-specific factors that activate transcription by direct effects on chromatin components. The encoded protein may also be involved in cell's DNA damage response independent of its role in transcriptional regulation. Several alternatively spliced transcript variants have been found for this gene

Molecular Weight: 54.4 kDa

NCBI Accession: [NP_001871](#)

Pathways: [MAPK Signaling](#), [RTK Signaling](#), [Thyroid Hormone Synthesis](#), [Activation of Innate immune Response](#), [Chromatin Binding](#), [Myometrial Relaxation and Contraction](#), [Synaptic Membrane](#), [Tube Formation](#), [Toll-Like Receptors Cascades](#)

Application Details

Application Notes: Recombinant human proteins can be used for:
Native antigens for optimized antibody production
Positive controls in ELISA and other antibody assays

Comment: The tag is located at the N-terminal.

Restrictions: For Research Use only

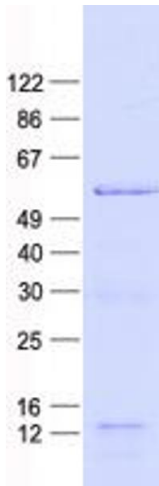
Handling

Concentration: 50 µg/mL

Buffer: 25 mM Tris, pH 8.0, 150 mM NaCl, 10 % glycerol, 1 % Sarkosyl.

Storage: -80 °C

Storage Comment: Store at -80°C. Thaw on ice, aliquot to individual single-use tubes, and then re-freeze immediately. Only 2-3 freeze thaw cycles are recommended.



Western Blotting

Image 1. Validation with Western Blot