

Datasheet for ABIN2715154

BHLHE23 Protein (Myc-DYKDDDDK Tag)



[Go to Product page](#)

1 Image

Overview

Quantity:	20 µg
Target:	BHLHE23
Origin:	Human
Source:	HEK-293 Cells
Protein Type:	Recombinant
Purification tag / Conjugate:	This BHLHE23 protein is labelled with Myc-DYKDDDDK Tag.
Application:	Antibody Production (AbP), Standard (STD)

Product Details

Characteristics:	<ul style="list-style-type: none"> • Recombinant human BHLHE23 protein expressed in HEK293 cells. • Produced with end-sequenced ORF clone
Purity:	> 80 % as determined by SDS-PAGE and Coomassie blue staining

Target Details

Target:	BHLHE23
Abstract:	BHLHE23 Products
Background:	<p>This gene encodes a member of the basic helix-loop-helix transcription factor family. Members of this family contain two highly conserved and functionally distinct domains: the basic domain targets sequence-specific DNA binding, while the helix-loop-helix domain facilitates protein interaction. Studies of a related gene in mouse suggest that the encoded protein may function as a transcriptional repressor in the pancreas and brain, and that it is required for normal retinal</p>

Target Details

	function.
Molecular Weight:	23.5 kDa
NCBI Accession:	NP_542173

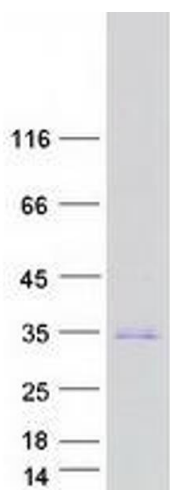
Application Details

Application Notes:	Recombinant human proteins can be used for: Native antigens for optimized antibody production Positive controls in ELISA and other antibody assays
Comment:	The tag is located at the C-terminal.
Restrictions:	For Research Use only

Handling

Concentration:	50 µg/mL
Buffer:	25 mM Tris.HCl, pH 7.3, 100 mM glycine, 10 % glycerol.
Storage:	-80 °C
Storage Comment:	Store at -80°C. Thaw on ice, aliquot to individual single-use tubes, and then re-freeze immediately. Only 2-3 freeze thaw cycles are recommended.

Images



Western Blotting

Image 1. Validation with Western Blot