

Datasheet for ABIN2715187

BCDIN3D Protein (Myc-DYKDDDDK Tag)[Go to Product page](#)**1** Image

Overview

Quantity:	20 µg
Target:	BCDIN3D
Origin:	Human
Source:	HEK-293 Cells
Protein Type:	Recombinant
Purification tag / Conjugate:	This BCDIN3D protein is labelled with Myc-DYKDDDDK Tag.
Application:	Antibody Production (AbP), Standard (STD)

Product Details

Characteristics:	<ul style="list-style-type: none">• Recombinant human BCDIN3D protein expressed in HEK293 cells.• Produced with end-sequenced ORF clone
Purity:	> 80 % as determined by SDS-PAGE and Coomassie blue staining

Target Details

Target:	BCDIN3D
Alternative Name:	Bcdin3d (BCDIN3D Products)
Background:	This gene encodes an RNA methyltransferase which belongs to the rossmann fold methyltransferase family, and serves as a 5'-methylphosphate capping enzyme that is specific for cytoplasmic histidyl tRNA. The encoded protein contains an S-adenosylmethionine binding domain and uses the methyl group donor, S-adenosylmethionine. This gene is overexpressed in breast cancer cells, and is related to the tumorigenic phenotype and poor

Target Details

prognosis of breast cancer. The encoded protein is thought to promote the cellular invasion of breast cancer cells, by downregulating the expression of tumor suppressor miRNAs through the dimethylation of the 5-monophosphate of the corresponding precursor miRNAs.

Molecular Weight: 33 kDa

NCBI Accession: [NP_859059](#)

Application Details

Application Notes: Recombinant human proteins can be used for:
Native antigens for optimized antibody production
Positive controls in ELISA and other antibody assays

Comment: The tag is located at the C-terminal.

Restrictions: For Research Use only

Handling

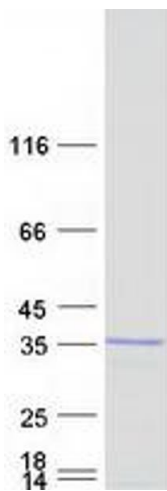
Concentration: 50 µg/mL

Buffer: 25 mM Tris.HCl, pH 7.3, 100 mM glycine, 10 % glycerol.

Storage: -80 °C

Storage Comment: Store at -80°C. Thaw on ice, aliquot to individual single-use tubes, and then re-freeze immediately. Only 2-3 freeze thaw cycles are recommended.

Images



Western Blotting

Image 1. Validation with Western Blot