



[Go to Product page](#)

Datasheet for ABIN2715213

BCS1L Protein (Transcript Variant 2) (Myc-DYKDDDDK Tag)

1 Image

Overview

Quantity:	20 µg
Target:	BCS1L
Protein Characteristics:	Transcript Variant 2
Origin:	Human
Source:	HEK-293 Cells
Protein Type:	Recombinant
Purification tag / Conjugate:	This BCS1L protein is labelled with Myc-DYKDDDDK Tag.
Application:	Antibody Production (AbP), Standard (STD)

Product Details

Characteristics:	<ul style="list-style-type: none">• Recombinant human BCS1L / BCS1 (transcript variant 2) protein expressed in HEK293 cells.• Produced with end-sequenced ORF clone
Purity:	> 80 % as determined by SDS-PAGE and Coomassie blue staining

Target Details

Target:	BCS1L
Alternative Name:	Bcs1l,bcs1 (BCS1L Products)
Background:	This gene encodes a homolog of the <i>S. cerevisiae</i> bcs1 protein which is involved in the assembly of complex III of the mitochondrial respiratory chain. The encoded protein does not contain a mitochondrial targeting sequence but experimental studies confirm that it is imported into mitochondria. Mutations in this gene are associated with mitochondrial complex III

Target Details

deficiency and the GRACILE syndrome. Several alternatively spliced transcripts encoding two different isoforms have been described.

Molecular Weight: 47.4 kDa

NCBI Accession: [NP_001073335](#)

Pathways: [SARS-CoV-2 Protein Interactome](#)

Application Details

Application Notes: Recombinant human proteins can be used for:
Native antigens for optimized antibody production
Positive controls in ELISA and other antibody assays

Comment: The tag is located at the C-terminal.

Restrictions: For Research Use only

Handling

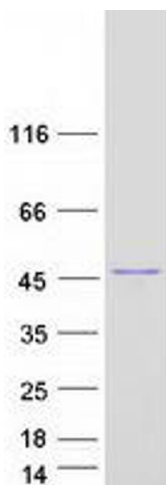
Concentration: 50 µg/mL

Buffer: 25 mM Tris.HCl, pH 7.3, 100 mM glycine, 10 % glycerol.

Storage: -80 °C

Storage Comment: Store at -80°C. Thaw on ice, aliquot to individual single-use tubes, and then re-freeze immediately. Only 2-3 freeze thaw cycles are recommended.

Images



Western Blotting

Image 1. Validation with Western Blot