



[Go to Product page](#)

Datasheet for ABIN2715236

CRYbA2 Protein (Transcript Variant 2) (Myc-DYKDDDDK Tag)

1 Image

Overview

Quantity:	20 µg
Target:	CRYbA2
Protein Characteristics:	Transcript Variant 2
Origin:	Human
Source:	HEK-293 Cells
Protein Type:	Recombinant
Purification tag / Conjugate:	This CRYbA2 protein is labelled with Myc-DYKDDDDK Tag.
Application:	Antibody Production (AbP), Standard (STD)

Product Details

Characteristics:	<ul style="list-style-type: none">• Recombinant human Beta-crystallin A2 (transcript variant 2) protein expressed in HEK293 cells.• Produced with end-sequenced ORF clone
Purity:	> 80 % as determined by SDS-PAGE and Coomassie blue staining

Target Details

Target:	CRYbA2
Alternative Name:	beta-Crystallin a2 (CRYbA2 Products)
Background:	Crystallins are separated into two classes: taxon-specific, or enzyme, and ubiquitous. The latter class constitutes the major proteins of the vertebrate eye, which function to maintain the transparency and refractive index of the lens. Since lens central fiber cells lose their nuclei

Target Details

during development, these crystallins are made and then retained throughout life, making them extremely stable proteins. Mammalian lens crystallins are divided into alpha, beta, and gamma families beta and gamma crystallins are also defined as a superfamily. Alpha and beta families are further divided into acidic and basic groups. Seven protein regions exist in crystallins: four homologous motifs, a connecting peptide, and N- and C-terminal extensions. Beta-crystallins, the most heterogeneous, differ by the presence of the C-terminal extension (present in the basic group but absent in the acidic group). Beta-crystallins form aggregates of different sizes and are able to form homodimers through self-association or heterodimers with other beta-crystallins. This gene is a beta acidic group member. Three alternatively spliced transcript variants encoding identical proteins have been reported.

Molecular Weight: 21.9 kDa

NCBI Accession: [NP_476434](#)

Application Details

Application Notes: Recombinant human proteins can be used for:
Native antigens for optimized antibody production
Positive controls in ELISA and other antibody assays

Comment: The tag is located at the C-terminal.

Restrictions: For Research Use only

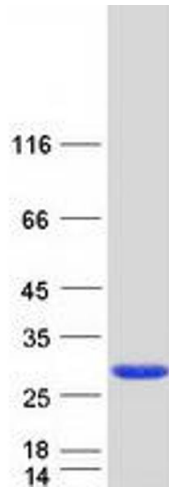
Handling

Concentration: 50 µg/mL

Buffer: 25 mM Tris.HCl, pH 7.3, 100 mM glycine, 10 % glycerol.

Storage: -80 °C

Storage Comment: Store at -80°C. Thaw on ice, aliquot to individual single-use tubes, and then re-freeze immediately. Only 2-3 freeze thaw cycles are recommended.



Western Blotting

Image 1. Validation with Western Blot