

Datasheet for ABIN2715263
BID Protein (Transcript Variant 2)



[Go to Product page](#)

1 Image

Overview

Quantity:	10 µg
Target:	BID
Protein Characteristics:	Transcript Variant 2
Origin:	Human
Source:	Escherichia coli (E. coli)
Protein Type:	Recombinant
Application:	Antibody Production (AbP), Standard (STD)

Product Details

Characteristics:	<ul style="list-style-type: none">• Recombinant human BID (transcript variant 2) protein expressed in E. coli.• Produced with end-sequenced ORF clone
Purity:	> 95 % as determined by SDS-PAGE and Coomassie blue staining
Endotoxin Level:	< 0.1 EU per µg protein as determined by LAL test

Target Details

Target:	BID
Alternative Name:	Bid (BID Products)
Background:	This gene encodes a death agonist that heterodimerizes with either agonist BAX or antagonist BCL2. The encoded protein is a member of the BCL-2 family of cell death regulators. It is a mediator of mitochondrial damage induced by caspase-8 (CASP8) CASP8 cleaves this encoded protein, and the COOH-terminal part translocates to mitochondria where it triggers cytochrome

Target Details

c release. Multiple alternatively spliced transcript variants have been found, but the full-length nature of some variants has not been defined.

Molecular Weight: 22 kDa

NCBI Accession: [NP_001187](#)

Pathways: [Apoptosis](#), [Caspase Cascade in Apoptosis](#), [Positive Regulation of Endopeptidase Activity](#)

Application Details

Application Notes: Recombinant human proteins can be used for:
Native antigens for optimized antibody production
Positive controls in ELISA and other antibody assays

Restrictions: For Research Use only

Handling

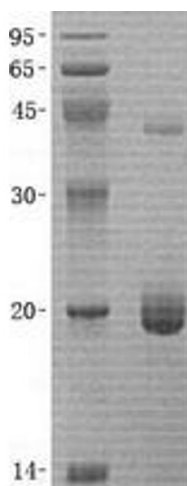
Concentration: 50 µg/mL

Buffer: 20 mM Phosphate buffer, 100 mM KCl, pH 7.4. Avoid repeated freeze-thaw cycles. Stable for at least 3 months from receipt of products under proper storage and handling conditions.

Storage: -80 °C

Storage Comment: Store at -80°C. Thaw on ice, aliquot to individual single-use tubes, and then re-freeze immediately. Only 2-3 freeze thaw cycles are recommended.

Images



Western Blotting

Image 1. Validation with Western Blot